

Acompanhamento dos Indicadores Econômicos - MS

RECEITAS	ACUMULADO ANO ANTERIOR	JAN (%)		FEV (%)		MAR (%)		ABR (%)		MAI (%)		JUN (%)		JUL (%)		AGO (%)		SET (%)		OUT (%)		TOTAL (%)				
		2016	2017	2016	2017	2016	2017	2016	2017	2016	2017	2016	2017	2016	2017	2016	2017	2016	2017	2016	2017	2016	2017			
RECEITAS TRIBUTÁRIAS	Arrecadação ICMS (R\$ mil)																									
	2016	7.131.760	↑ 3%	2017	589.700	↓ -1,25%	509.325	↓ -14%	587.791	↓ -4%	623.192	↓ -3,5%	638.194	↑ 10,5%	632.545	↑ 12,9%	611.151	↑ 3,8%	653.438	↑ 10,3%	658.260	↑ 9,7%	664.897	↑ 16,1%	6.168.495	↑ 3,9%
	2015	6.929.552		2016	597.157		591.769		610.694		646.022		577.453		560.255		588.813		592.643		600.013		572.532		5.937.351	
	Arrecadação IPVA (R\$ mil)																									
	2016	533.409	↑ 52%	2017	272.158	↑ 12,5%	39.486	↓ -16%	46.693	↑ 7,5%	37.167	↓ -4,5%	42.034	↑ 8,4%	20.749	↑ 1,4%	17.165	↓ -3,7%	21.412	↑ 21,8%	11.735	↓ -5,2%	9.827	↓ -8,8%	518.425	↑ 6,0%
	2015	351.264		2016	241.837		46.897		43.443		38.902		38.783		20.469		17.833		17.583		12.379		10.772		488.899	
	Arrecadação ITCD (R\$ mil)																									
	2016	165.389	↑ 43%	2017	9.488	↓ -50,3%	4.743	↓ -77%	10.447	↓ -26%	9.525	↑ 4,1%	9.704	↓ -24,3%	13.827	↑ 15,8%	10.183	↑ 9,1%	10.906	↓ -22%	9.109	↓ -62%	7.963	↓ -18,7%	95.894	↓ -34%
	2015	116.060		2016	19.083		21.030		14.156		9.150		12.819		65.182		9.332		13.941		24.227		9.799		145.472	
	Arrecadação IRRF (R\$ mil)																									
2016	676.262	↑ 14%	2017	102.362	↑ 141,6%	36.563	↓ -16%	91.922	↑ 67,9%	74.664	↑ 33,7%	86.011	↑ 49,3%	62.601	↓ -4,0%	67.302	↑ 27%	67.747	↑ 20,8%	73.338	↑ 5,3%	68.119	↑ 3,6%	730.629	↑ 30%	
2015	592.049		2016	42.376		43.611		54.752		55.857		57.626		65.182		53.151		56.079		69.636		65.772		564.041		
Outras Receitas Tributárias (R\$ mil)																										
2016	298.990	↑ 3%	2017	23.019	↑ 9,2%	21.463	↑ 7%	22.617	↓ -3%	29.803	↑ 38%	25.953	↑ 10%	27.104	↑ 22%	24.153	↓ -31,3%	23.274	↓ -16,7%	28.439	↑ 11%	20.241	↓ -24,3%	246.065	↓ -0,5%	
2015	289.472		2016	21.080		20.018		23.432		21.532		23.700		22.289		35.137		27.938		25.533		26.735		247.394		
RECEITAS DE TRANSFERÊNCIAS	Cota-Parte do FPE (R\$ mil)																									
	2016	1.208.996	↑ 19%	2017	96.958	↑ 7,3%	126.916	↑ 12%	77.890	↑ 13%	97.409	↑ 19%	107.475	↓ -1,0%	99.762	↑ 11,2%	80.069	↑ 23%	88.420	↑ 10%	74.818	↑ 14%	88.321	↑ 8,4%	938.037	↑ 11%
	2015	1.017.410		2016	90.344		113.373		68.698		81.667		108.614		89.719		65.047		80.668		65.599		81.443		845.172	
	Transferências da LC 61/1989 (R\$ mil)																									
	2016	83.521	↓ -9%	2017	6.992	↓ -20,2%	7.688	↑ 14%	6.042	↓ -8%	7.295	↑ 7,7%	6.845	↓ -11,0%	6.882	↑ 50,3%	7.731	↑ 24%	7.235	↑ 15%	7.727	↑ 12,3%	9.752	↑ 34,1%	74.189	↑ 9,4%
	2015	91.455		2016	8.756		6.763		6.602		6.775		7.693		4.578		6.220		6.285		6.883		7.275		67.830	
	Transferências do FUNDEB (R\$ mil)																									
	2016	914.707	↑ 7%	2017	83.156	↑ 10,3%	66.623	↓ -28%	89.880	↑ 28%	74.209	↓ -0,7%	84.723	↑ 8,8%	73.376	↑ 7,3%	80.169	↑ 23%	73.560	↑ 4,0%	70.333	↑ 4,0%	93.132	↑ 20,2%	789.161	↑ 7%
	2015	854.672		2016	75.391		93.083		70.186		74.696		77.882		68.411		64.952		70.742		67.639		77.464		740.446	
	Outras Transferências Correntes (R\$ mil)																									
2016	1.114.214	↑ 81%	2017	84.337	↑ 38,2%	70.511	↑ 44,2%	92.108	↑ 49,2%	79.447	↓ -22%	78.934	↓ -20,8%	85.643	↓ -14%	88.354	↑ 3,0%	115.985	↑ 49,5%	91.290	↑ 18,7%	86.046	↑ 5,6%	872.654	↑ 10%	
2015	615.747		2016	61.032		48.902		61.747		101.851		99.724		99.084		85.758		77.577		76.909		81.501		794.085		
Transferências Correntes (Total) - MS (R\$ mil)																										
2016	3.339.496	↑ 29%	2017	272.947	↑ 15,2%	273.242	↑ 3,6%	267.424	↑ 28,1%	259.865	↓ -2%	15.192	↓ -94,9%	15.262	↓ -94%	257.827	↑ 15,4%	286.704	↑ 21,1%	245.674	↑ 12,4%	278.756	↑ 11,9%	2.172.893	↓ -12%	
2015	2.597.340		2016	237.029		263.625		208.738		266.493		295.418		263.297		223.483		236.776		218.535		249.187		2.462.580		
Receita Corrente Líquida - MS (R\$)																										
2016	9.380.901	↑ 13%	2017	887.836	↑ -2,8%	647.405	↑ 0,2%	814.895	↑ 12,9%	774.502	↓ -4%	835.796	↑ 7,4%	799.286	↑ 8,0%	759.218	↑ 3,9%	815.207	↑ 9,1%	781.981	↑ 5,1%	792.579	↑ 10,0%	7.908.705	↑ 4,8%	
2015	8.321.250		2016	913.085		645.850		721.886		805.220		778.270		740.241		730.521		746.973		744.130		720.293		7.546.468		

* Ausência de Dados

Fontes: Receitas Estuduais e RCL: Relatório Resumido de Execução Orçamentária - SCGE

Boletim FOCO - MS
Dezembro de 2017

Acompanhamento do ICMS por Setor - MS

RECEITAS
ESTADUAIS

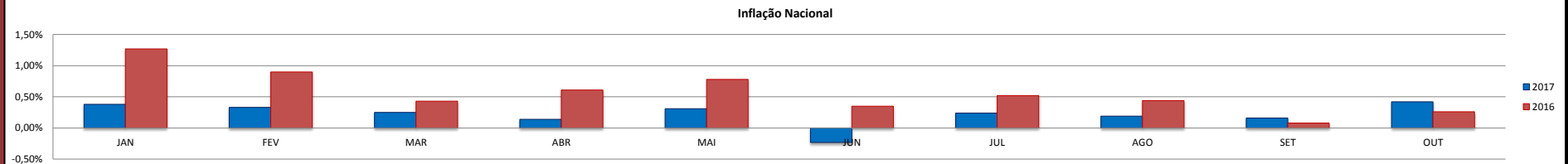
ACUMULADO ANO ANTERIOR		JAN	(%)	FEV	(%)	MAR	(%)	ABR	(%)	MAI	(%)	JUN	(%)	JUL	(%)	AGO	(%)	SET	(%)	OUT	(%)	TOTAL	(%)														
ICMS - Comercio Atacadista (R\$ mil)																																					
2016	1.608.751	↑	22%	2017	152.647	↑	24%	126.832	↑	16%	131.127	↑	9%	153.802	↑	13%	135.816	↑	7%	142.975	↑	10%	155.664	↑	9%	151.157	↑	3%	154.767	↑	7%	160.701	↑	14%	1.465.488	↑	24%
2015	1.317.415			2016	122.662			109.502			120.285			135.877			126.604			129.903			142.567			147.067			144.291			140.933			1.178.758		
ICMS - Comércio Varejista (R\$ mil)																																					
2016	1.157.270	↓	-0,1%	2017	110.681	↑	0,2%	88.452	↑	1,2%	89.582	↓	-7%	87.985	↓	-19%	97.680	↑	1,1%	94.733	↓	-0,4%	95.179	↑	1,2%	98.921	↑	2,4%	96.533	↑	5,9%	98.900	↑	11%	958.646	↑	9,4%
2015	1.158.095			2016	110.472			87.363			95.978			109.108			96.637			95.088			94.090			96.590			91.190			89.122			876.516		
ICMS - Energia Elétrica - Setor Secundário (R\$ mil)																																					
2016	2.646	↓	-76%	2017	507	↑	25%	502	↓	-89%	489	↓	-5%	505	↓	-67%	507	↑	97%	376	↑	38%	349	↑	6%	301	↑	3%	236	↓	-66%	1309	↑	209%	5.081	↓	-43%
2015	11.224			2016	404			4.648			513			1.538			258			272			329			291			686			423			8.939		
ICMS - Energia Elétrica - Setor Terciário (R\$ mil)																																					
2016	515.365	↓	-3,3%	2017	47.394	↓	-3%	49.717	↓	-0,3%	46.208	↓	-7,3%	46.782	↓	-5,4%	39.982	↓	-17,5%	36.831	↓	-15,9%	37.623	↓	-1,7%	33.391	↓	-13,8%	37.426	↓	-5,7%	40.744	↑	0,9%	416.098	↑	2,2%
2015	533.221			2016	48.898			49.842			49.827			49.450			48.472			43.794			38.281			38.752			39.702			40.397			407.018		
ICMS - Outros (R\$ mil)																																					
2016	60.379	↓	-14,9%	2017	9.356	↑	113%	4.375	↓	-22%	4.763	↓	-19%	5.063	↑	1,2%	6.197	↑	31%	7.836	↑	39%	7.350	↓	-7%	7.199	↑	5%	14.825	↑	159%	13.027	↑	104%	79.991	↑	55%
2015	70.944			2016	4.396			5.583			5.882			5.005			4.728			5.656			7.869			6.877			5.716			6.394			51.712		
ICMS - Petróleo, comb. e Lubr. - Setor Secund (R\$ mil)																																					
2016	109.598	↑	0,8%	2017	16.911	↑	85%	6.738	↓	-17%	6.289	↓	-29%	8.992	↑	23%	6.015	↓	-25%	5.409	↓	-21%	6.907	↓	-7%	8.156	↓	-12%	8.242	↓	-1%	8.588	↓	-26%	82.247	↑	12%
2015	108.775			2016	9.147			8.161			8.866			7.328			8.017			6.808			7.439			9.267			8.329			11.632			73.362		
ICMS - Petróleo, comb. e Lubr. - Setor Terciário (R\$ mil)																																					
2016	2.645.662	↑	1,5%	2017	182.682	↓	-14%	162.504	↓	-29%	193.571	↓	-14%	220.904	↓	-7%	259.689	↑	21%	238.063	↑	18%	184.098	↓	-8%	244.015	↑	15%	252.436	↑	14%	253.625	↑	18%	2.191.587	↑	12%
2015	2.607.254			2016	212.704			227.391			225.562			237.481			214.638			201.076			199.224			212.328			221.450			214.329			1.951.854		
ICMS - Setor Terciário - Serviços Comunicação (R\$ mil)																																					
2016	460.215	↓	-4,7%	2017	41.558	↓	-5%	41.987	↑	6,9%	43.336	↑	9,3%	42.005	↑	4,4%	41.125	↑	0,5%	40.459	↓	-0,6%	39.239	↓	-1,0%	39.475	↓	-1,2%	32.516	↓	-18%	32.487	↓	-19%	394.187	↑	8,4%
2015	482.857			2016	43.628			39.286			39.636			40.227			40.930			40.702			39.643			39.942			39.537			40.125			363.531		
ICMS - Setor Terciário - Serviços Transporte (R\$ mil)																																					
2016	57.420	↑	4,6%	2017	5.931	↑	28%	4.069	↓	-23%	4.275	↓	-16%	4.893	↑	12%	5.128	↑	1,2%	5.495	↑	40%	5.778	↑	41%	5.870	↑	26%	6.801	↑	54%	6.846	↑	56%	55.086	↑	33%
2015	54.883			2016	4.636			5.273			5.072			4.356			5.069			3.922			4.091			4.677			4.421			4.393			41.517		
ICMS - Setor Primário (R\$ mil)																																					
2016	722.466	↓	-24%	2017	66.404	↑	19,8%	70.400	↓	-7%	117.855	↑	34,5%	88.308	↓	-14%	85.911	↑	10,5%	97.909	↑	21,2%	120.739	↑	21,9%	102.826	↑	30,8%	86.887	↓	-1,4%	83.119	↑	23%	920.358	↑	23%
2015	950.846			2016	55.406			76.046			87.606			102.300			77.755			80.814			99.007			78.606			88.165			67.356			745.705		
ICMS - Setor Secundário (R\$ mil)																																					
2016	411.856	↓	-0,8%	2017	37.198	↑	7,5%	31.640	↑	17,7%	33.842	↑	9,5%	41.008	↑	20,2%	35.256	↑	4,4%	40.045	↑	29,3%	38.818	↑	9,9%	44.815	↑	22,8%	47.731	↑	24,0%	46.347	↑	25%	396.700	↑	32%
2015	415.059			2016	34.615			26.893			30.914			34.117			33.775			30.959			35.335			36.492			38.478			37.116			301.578		

* Ausência de Dados

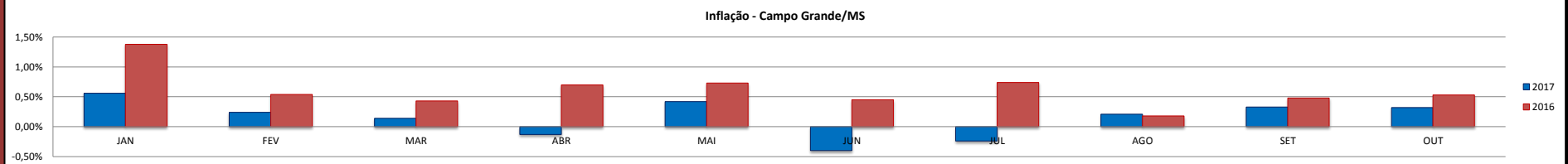
Fontes: ICMS por Setor: Superintendência de Contabilidade Geral do Estado - SCGE

Outros Indicadores

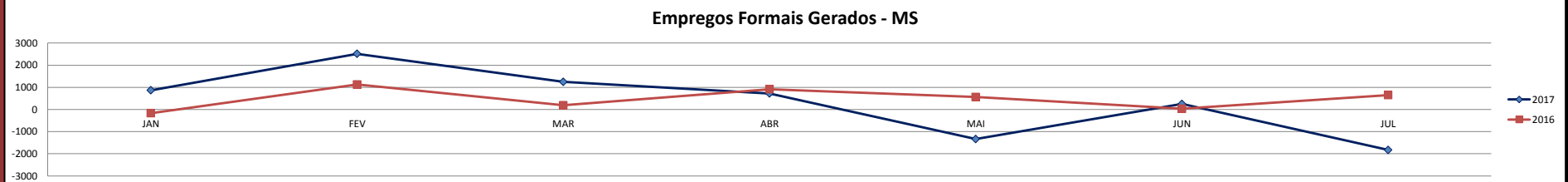
ACUMULADO ANO ANTERIOR	JAN	(%)	FEV	(%)	MAR	(%)	ABR	(%)	MAI	(%)	JUN	(%)	JUL	(%)	AGO	(%)	SET	(%)	OUT	(%)	TOTAL	(%)			
Inflação Nacional - IPCA Variação Mensal (Meta 4,5% - BACEN)																									
2016	6,29	↓ -41%	2017	0,38%	↓ -70%	0,33%	↓ -63%	0,25%	↓ -42%	0,14%	↓ -77%	0,31%	↓ -60%	-0,23%	↓ -166%	0,24%	↓ -54%	0,19%	↓ -57%	0,16%	↑ 100%	0,42%	↑ 62%	2,19%	↓ -61%
2015	10,67		2016	1,27%		0,90%		0,43%		0,61%		0,78%		0,35%		0,52%		0,44%		0,08%		0,26%		5,64%	



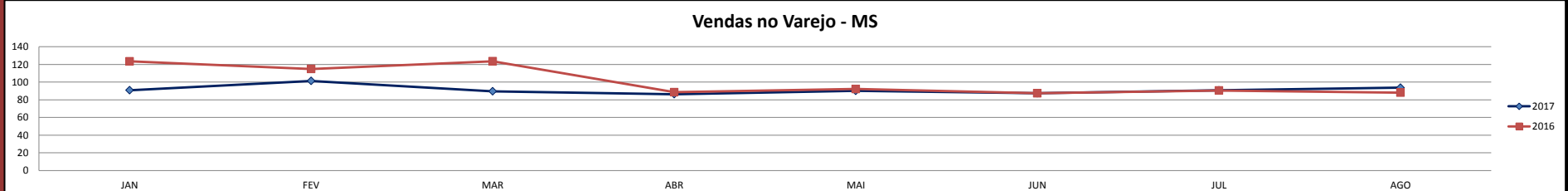
ACUMULADO ANO ANTERIOR	JAN	(%)	FEV	(%)	MAR	(%)	ABR	(%)	MAI	(%)	JUN	(%)	JUL	(%)	AGO	(%)	SET	(%)	OUT	(%)	TOTAL	(%)			
Inflação Local - IPCA Variação Mensal (Campo Grande)																									
2016	7,29	↓ -24%	2017	0,56%	↓ -59%	0,24%	↓ -56%	0,14%	↓ -67%	-0,13%	↓ -119%	0,42%	↓ -42%	-0,40%	↓ -189%	0,24%	↓ -132%	0,21%	↑ 17%	0,33%	↓ -31%	0,32%	↓ -40%	1,45%	↓ -76%
2015	9,55		2016	1,38%		0,54%		0,43%		0,70%		0,73%		0,45%		0,74%		0,18%		0,48%		0,53%		6,16%	



ACUMULADO ANO ANTERIOR	JAN	(%)	FEV	(%)	MAR	(%)	ABR	(%)	MAI	(%)	JUN	(%)	JUL	(%)	AGO	(%)	SET	(%)	OUT	(%)	TOTAL	(%)
Empregos formais gerados MS - UN																						
2016	-2422	↑ 83%	2017	871	↑ 634%	2517	↑ 124%	1245	↑ 566%	724	↓ -21%	-1336	↓ -338%	250	↑ 614%	-1827	↓ -380%	*	*	*	2.444	↓ -26%
2015	-14611		2016	-163		1124		187		919		562		35		652					3.316	



ACUMULADO ANO ANTERIOR	JAN	(%)	FEV	(%)	MAR	(%)	ABR	(%)	MAI	(%)	JUN	(%)	JUL	(%)	AGO	(%)	SET	(%)	OUT	(%)	TOTAL	(%)	
Índice de Volume de Vendas no Varejo - Total MS																							
2016	1099,8	↑ 31%	2017	90,8	↓ -26%	101,3	↓ -12%	89,6	↓ -28%	86,3	↓ -2,5%	90	↓ -2,4%	87,3	↓ -0,1%	90,7	↑ 0,22%	93,7	↑ 6,36%	*	*	729,7	↓ -10%
2015	1593,5		2016	123,5		114,9		123,6		88,5		92,2		87,4		90,5		88,1				808,7	

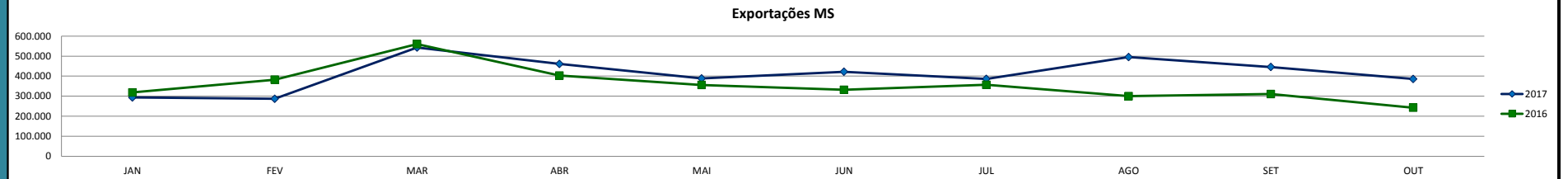


* Ausência de Dados.

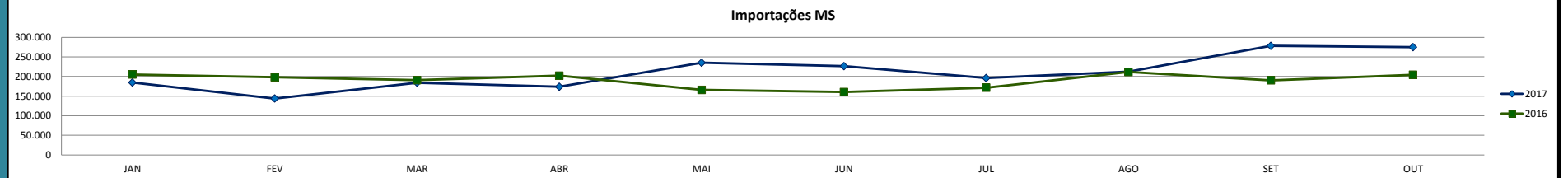
Fonte: IPCA, IPCA (Campo Grande), Empregos Formais - MS, Vendas Varejo - MS; SGS - Bacen.

Balança Comercial - MS

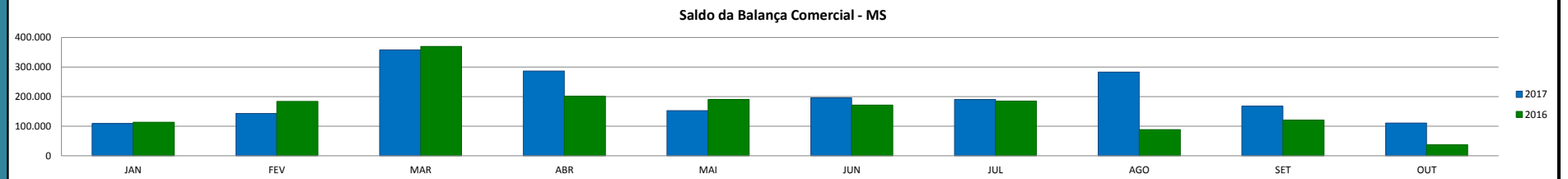
ACUMULADO ANO ANTERIOR	JAN	(%)	FEV	(%)	MAR	(%)	ABR	(%)	MAI	(%)	JUN	(%)	JUL	(%)	AGO	(%)	SET	(%)	OUT	(%)	TOTAL	(%)		
Exportação de Bens Mato Grosso do Sul (US\$ mil)																								
2016	4.071.327		293.420		286.775		542.975		461.075		388.165		422.298		386.440		495.486		446.182		386.015		4.108.831	
2015	4.735.117	↓ -14%	318.395	↓ -8%	382.428	↓ -25%	560.308	↓ -3,1%	403.150	↑ 14,4%	356.424	↑ 8,9%	331.877	↑ 27,2%	356.787	↑ 8,3%	300.264	↑ 65,0%	310.887	↑ 43,5%	242.296	↑ 59,3%	3.562.816	↑ 15,3%



Importação de Bens Mato Grosso do Sul (US\$ mil)																								
2016	2.302.607	↓ -33%	184.571	↓ -10%	143.858	↓ -27%	184.271	↓ -3,3%	174.043	↓ -13,9%	235.281	↑ 41,8%	226.376	↑ 41,2%	196.265	↑ 14,3%	212.274	↑ 0,3%	278.177	↑ 46,1%	274.736	↑ 34,4%	2.109.853	↑ 11,0%
2015	3.422.452		205.127		198.140		190.573		202.204		165.938		160.313		171.648		211.639		190.370		204.485		1.900.437	



Balança Comercial (US\$ mil)																								
2016	1.768.718	↑ 35%	108.849	↓ -4%	142.917	↓ -22%	358.703	↓ -3,0%	287.032	↑ 42,8%	152.884	↓ -19,7%	195.921	↑ 14,2%	190.175	↑ 2,7%	283.212	↑ 220%	168.005	↑ 39,4%	111.279	↑ 194%	1.998.977	↑ 20,2%
2015	1.312.666		113.267		184.288		369.736		200.946		190.486		171.564		185.138		88.625		120.516		37.810		1.662.376	



Fonte: Exportação, Importação e Balança de Pagamentos: SGS - Bacen;

Análise do Incremento Nominal e Real das Receitas Tributárias (ICMS, IPVA, ITCD) e da Receita Corrente Líquida (RCL)

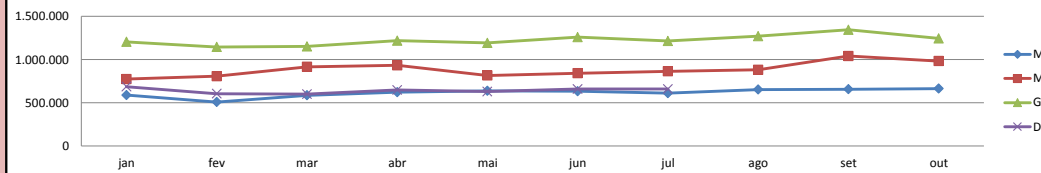
Análise do Incremento Nominal e Real de 2017 com base na Inflação de 2016 (IPCA: 6,29% - R\$ mil)

Mês	Mato Grosso do Sul				Mato Grosso				Goiás				Distrito Federal				Centro-Oeste				Brasil			
	2016	2017	Real	Nominal	2016	2017	Real	Nominal	2016	2017	Real	Nominal	2016	2017	Real	Nominal	2016	2017	Real	Nominal	2016	2017	Real	Nominal
jan	597.157	589.700	-7,09%	-1,25%	765.044	774.616	-4,74%	1,25%	1.271.845	1.206.098	-10,8%	-5,17%	643.886	687.962	0,52%	6,85%	3.334.620	3.353.410	-5,39%	0,56%	35.917.616	39.192.955	2,66%	9,12%
fev	591.769	509.325	-19,0%	-13,9%	710.858	807.046	6,81%	13,5%	1.041.086	1.147.686	3,72%	10,2%	598.087	605.796	-4,71%	1,29%	2.997.351	3.158.260	-0,87%	5,37%	33.151.617	32.565.440	-7,58%	-1,77%
mar	610.694	587.791	-9,45%	-3,75%	792.523	916.416	8,79%	15,6%	1.109.966	1.151.598	-2,39%	3,75%	481.084	599.747	17,3%	24,7%	2.384.252	3.353.024	32,3%	40,6%	32.771.789	35.024.127	0,55%	6,87%
abr	646.022	623.192	-9,24%	-3,53%	831.002	933.142	5,65%	12,3%	1.182.974	1.218.374	-3,10%	2,99%	627.757	649.022	-2,73%	3,39%	3.377.667	3.511.711	-2,18%	3,97%	34.286.273	36.181.894	-0,72%	5,53%
mai	577.453	638.194	3,98%	10,5%	795.668	816.079	-3,50%	2,57%	1.165.418	1.193.456	-3,65%	2,41%	651.935	628.865	-9,25%	-3,54%	3.279.382	3.365.089	-3,46%	2,61%	33.844.692	35.049.263	-2,57%	3,56%
jun	560.255	632.545	6,22%	12,9%	800.212	842.662	-0,93%	5,30%	1.183.153	1.260.097	0,20%	6,50%	555.315	660.245	11,9%	18,9%	3.186.201	3.485.691	2,93%	9,40%	33.796.441	36.026.168	0,29%	6,60%
jul	588.813	611.151	-2,35%	3,79%	831.978	865.134	-2,17%	3,99%	1.209.834	1.214.576	-5,55%	0,39%	665.481	658.433	-6,91%	-1,06%	3.385.181	3.443.597	-4,29%	1,73%	33.880.962	34.823.336	-3,30%	2,78%
ago	592.643	653.438	3,73%	10,3%	795.574	881.082	4,19%	10,7%	1.141.907	1.270.957	4,71%	11,3%	628.865	2.903.172	-16,0%	-10,7%	3.251.249	2.903.172	-16,0%	-10,7%	34.236.307	36.427.191	0,10%	6,40%
set	600.013	658.260	3,22%	9,71%	794.078	1.041.688	23,4%	31,2%	1.272.033	1.344.684	-0,54%	5,71%	3.344.365	3.138.819	-11,7%	-6,15%	3.344.365	3.138.819	-11,7%	-6,15%	34.312.914	36.319.973	-0,41%	5,8%
out	572.532	664.897	9,26%	16,1%	839.094	983.119	10,2%	17,2%	1.178.972	1.244.772	1,22%	5,58%	3.339.127	2.989.127	-15,8%	-10,5%	3.339.127	2.989.127	-15,8%	-10,5%	35.153.589	31.191.773	-16,5%	-11,3%
Total	5.937.351	6.168.495	-2,26%	3,89%	7.956.031	8.860.984	4,78%	11,4%	11.757.188	12.252.298	-1,96%	4,21%	4.223.545	4.490.070	0,02%	6,31%	31.879.649	32.701.900	-3,49%	2,58%	341.352.201	352.802.120	-2,76%	3,35%

Análise do Incremento Nominal e Real de 2016 com base na Inflação de 2015 (IPCA: 10,67% - R\$ mil)

	2015	2016	Real	Nominal
MS	6.929.552	7.120.227	-7,15%	2,75%
MT	9.078.004	9.670.682	-3,74%	6,53%
GO	13.745.218	14.334.660	-5,77%	4,29%
DF	6.798.523	8.136.028	8,14%	19,67%
CT-OESTE	37.208.598	40.264.800	-2,22%	8,21%
BRASIL	401.319.741	412.783.090	-7,06%	2,86%

ICMS 2017 (R\$ mil)



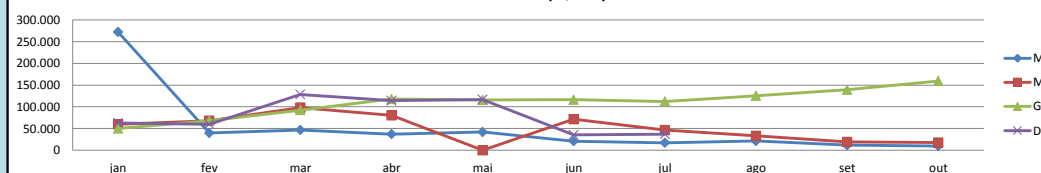
Análise do Incremento Nominal e Real de 2017 com base na Inflação de 2016 (IPCA: 6,29% - R\$ mil)

Mês	Mato Grosso do Sul				Mato Grosso				Goiás				Distrito Federal				Centro-Oeste				Brasil			
	2016	2017	Real	Nominal	2016	2017	Real	Nominal	2016	2017	Real	Nominal	2016	2017	Real	Nominal	2016	2017	Real	Nominal	2016	2017	Real	Nominal
jan	241.837	272.158	5,88%	12,5%	47.882	60.030	18,0%	25,4%	56.255	50.157	-16,1%	-10,8%	28.525	62.870	107%	120%	375.262	448.616	12,5%	19,5%	11.216.158	11.835.989	-0,72%	5,53%
fev	46.897	39.486	-20,8%	-15,8%	68.504	67.888	-6,76%	-0,90%	87.921	67.888	-27,4%	-22,8%	50.174	59.913	12,3%	19,4%	254.425	344.251	27,3%	35,3%	5.837.055	6.224.957	0,33%	6,65%
mar	43.443	46.693	1,12%	7,48%	83.900	98.292	10,2%	17,2%	149.659	92.210	-42,0%	-38,4%	355.527	128.523	-66,0%	-63,9%	589.132	369.072	-41,1%	-37,4%	5.560.871	5.549.762	-6,11%	-0,20%
abr	38.902	37.167	-10,1%	-4,46%	81.435	80.185	-7,36%	-1,53%	168.349	117.947	-34,1%	-29,9%	137.393	113.921	-22,0%	-17,1%	427.587	352.035	-22,5%	-17,7%	3.179.298	3.007.478	-11,0%	-5,40%
mai	38.783	42.034	1,97%	8,38%	84.382	0	-100%	-100%	213.136	115.661	-48,9%	-45,7%	131.821	116.778	-16,7%	-11,4%	470.128	278.459	-44,3%	-40,8%	2.531.012	2.430.800	-9,64%	-3,96%
jun	20.469	20.749	-4,63%	1,37%	64.197	71.330	4,54%	11,1%	214.301	116.169	-49,0%	-45,8%	36.920	35.663	-9,12%	-3,40%	338.307	247.878	-31,1%	-26,7%	2.192.033	2.142.553	-8,04%	-2,26%
jul	17.833	17.165	-9,44%	-3,74%	45.105	46.426	-3,16%	2,93%	214.465	112.236	-50,8%	-47,7%	30.749	37.199	13,8%	21,0%	310.937	216.988	-34,3%	-30,2%	1.846.310	1.781.396	-9,23%	-3,52%
ago	17.583	21.412	14,6%	21,8%	35.663	33.070	-12,8%	-7,27%	71.204	125.641	66,0%	76,5%	30.749	37.199	13,8%	21,0%	154.289	184.790	12,7%	19,8%	1.578.693	1.803.882	7,50%	14,3%
set	12.379	11.735	-10,8%	-5,20%	22.530	19.183	-19,9%	-14,9%	42.539	139.190	208%	227%	30.749	116.695	107%	120%	116.695	173.196	39,6%	48,4%	1.346.395	1.467.668	2,56%	9,01%
out	10.772	9.827	-14,2%	-8,77%	19.457	17.432	-15,7%	-10,4%	34.429	159.457	336%	363%	30.749	107.642	189,289%	75,9%	107.642	189.289	65,4%	75,9%	1.151.742	1.104.231	-9,80%	-4,13%
Total	488.899	518.425	-0,24%	6,04%	553.055	493.836	-16,0%	-10,7%	1.252.258	1.096.556	-17,6%	-12,4%	771.109	554.867	-32,3%	-28,0%	3.144.404	2.804.574	-16,1%	-10,8%	36.439.567	37.348.716	-3,57%	2,49%

Análise do Incremento Nominal e Real de 2016 com base na Inflação de 2015 (IPCA: 10,67% - R\$ mil)

	2015	2016	Real	Nominal
MS	351.264	533.409	37,21%	51,85%
MT	539.797	585.368	-2,01%	8,44%
GO	1.063.052	1.319.626	12,17%	24,14%
DF	782.034	918.686	6,15%	17,47%
CT-OESTE	2.750.511	3.383.107	11,14%	23,00%
BRASIL	36.392.792	39.347.573	-2,30%	8,12%

IPVA 2017 (R\$ mil)



Fontes:
Dados MT, GO, DF, Centro-oeste e Brasil: Cotepe-Confaz.
Dados MS: Superintendência de Contabilidade Geral do Estado - RREO

Análise do Incremento Nominal e Real das Receitas Tributárias (ICMS, IPVA, ITCD) e da Receita Corrente Líquida (RCL)

Análise do Incremento Nominal e Real de 2017 com base na Inflação de 2016 (IPCA: 6,29% - R\$ mil)

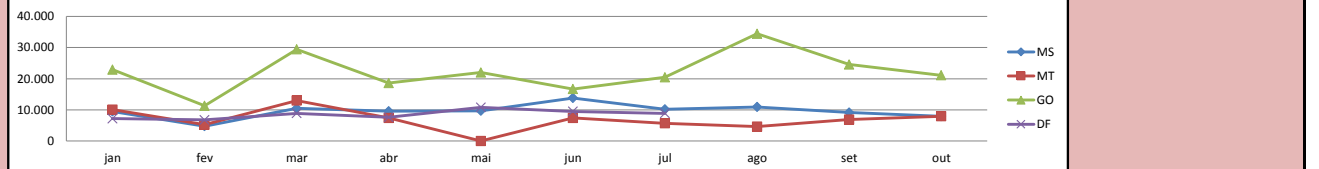
Mês	Mato Grosso do Sul				Mato Grosso				Goiás				Distrito Federal				Centro-Oeste				Brasil			
	2016	2017	Real	Nominal	2016	2017	Real	Nominal	2016	2017	Real	Nominal	2016	2017	Real	Nominal	2016	2017	Real	Nominal	2016	2017	Real	Nominal
jan	19.083	9.488	↓ -53,2%	↓ -50,3%	4.567	10.081	↑ 108%	↑ 123%	21.179	22.924	↑ 1,83%	↑ 8,24%	14.984	7.159	↓ -55,0%	↓ -52,2%	59.849	49.880	↓ -21,6%	↓ -16,7%	330.621	370.946	↑ 5,56%	↑ 12,20%
fev	21.030	4.743	↓ -78,8%	↓ -77,4%	6.916	5.231	↓ -28,8%	↓ -24,4%	21.767	11.283	↓ -51,2%	↓ -48,2%	6.316	6.759	↑ 0,68%	↑ 7,01%	56.150	28.065	↓ -53,0%	↓ -50,0%	398.950	373.705	↓ -11,9%	↓ -6,33%
mar	14.156	10.447	↓ -30,6%	↓ -26,2%	8.435	12.991	↑ 44,9%	↑ 54,0%	17.053	29.428	↑ 62,4%	↑ 72,6%	7.934	8.895	↑ 5,48%	↑ 12,1%	33.438	61.807	↑ 73,9%	↑ 84,8%	662.549	514.282	↓ -27,0%	↓ -22,4%
abr	9.150	9.525	↓ -2,07%	↑ 4,09%	6.225	7.368	↑ 11,4%	↑ 18,4%	22.802	18.603	↓ -23,2%	↓ -18,4%	7.394	7.574	↓ -3,63%	↑ 2,43%	45.627	43.115	↓ -11,1%	↓ -5,51%	451.667	410.209	↓ -14,6%	↓ -9,18%
mai	12.819	9.704	↓ -28,8%	↓ -24,3%	9.711	0	↓ -100%	↓ -100%	24.696	21.991	↓ -16,2%	↓ -11,0%	26.032	10.762	↓ -61,1%	↓ -58,7%	73.399	42.503	↓ -45,5%	↓ -42,1%	568.419	497.057	↓ -17,7%	↓ -12,6%
jun	11.935	13.827	↑ 8,99%	↑ 15,8%	5.181	7.361	↑ 33,7%	↑ 42,1%	18.356	16.675	↓ -14,5%	↓ -9,16%	7.727	9.487	↑ 15,5%	↑ 22,8%	43.281	47.390	↑ 3,01%	↑ 9,49%	824.724	581.671	↓ -33,6%	↓ -29,5%
jul	9.332	10.183	↑ 2,66%	↑ 9,12%	7.430	5.677	↓ -28,1%	↓ -23,6%	24.767	20.456	↓ -22,3%	↓ -17,4%	8.181	8.855	↑ 1,83%	↑ 8,24%	49.786	45.374	↓ -14,3%	↓ -8,86%	455.155	859.358	↑ 77,6%	↑ 88,8%
ago	13.941	10.906	↓ -26,4%	↓ -21,8%	13.490	4.609	↓ -67,9%	↓ -65,8%	21.687	34.400	↑ 49,2%	↑ 58,6%	10.762	10.762	↓ -61,1%	↓ -58,7%	57.143	50.570	↓ -16,7%	↓ -11,5%	508.003	657.726	↑ 21,8%	↑ 29,5%
set	24.227	9.109	↓ -64,6%	↓ -62,4%	6.286	6.887	↑ 3,08%	↑ 9,56%	15.074	24.553	↑ 53,2%	↑ 62,9%	15.074	24.553	↑ 53,2%	↑ 62,9%	53.196	40.595	↓ -28,2%	↓ -23,7%	538.656	630.505	↑ 10,1%	↑ 17,1%
out	9.799	7.963	↓ -23,5%	↓ -18,7%	10.435	7.963	↓ -28,2%	↓ -23,7%	14.133	21.121	↑ 40,6%	↑ 49,4%	14.133	21.121	↑ 40,6%	↑ 49,4%	44.168	33.077	↓ -29,5%	↓ -25,1%	517.400	529.915	↓ -3,64%	↑ 2,42%
Total	145.472	95.894	↓ -38,0%	↓ -34,1%	78.676	68.168	↓ -18,5%	↓ -13,4%	201.514	221.434	↑ 3,38%	↑ 9,89%	78.568	59.491	↓ -28,8%	↓ -24,3%	516.037	442.376	↓ -19,3%	↓ -14,3%	5.256.145	5.425.374	↓ -2,89%	↑ 3,22%

ITCD

Análise do Incremento Nominal e Real de 2016 com base na Inflação de 2015 (IPCA: 10,67% - R\$ mil)

	2015	2016	Real	Nominal
MS	116.060	165.389	↑ 28,8%	↑ 42,5%
MT	80.173	97.007	↑ 9,33%	↑ 21,0%
GO	301.092	249.217	↓ -25,2%	↓ -17,2%
DF	133.418	127.835	↓ -13,4%	↓ -4,18%
CT-OESTE	631.592	640.465	↓ -8,37%	↑ 1,40%
BRASIL	6.547.414	7.362.609	↑ 1,61%	↑ 12,5%

ITCD 2017 (R\$ mil)



RCL - MS

Análise do Incremento Nominal e Real de 2017 com base na Inflação de 2016 (IPCA: 6,29% - R\$ mil)

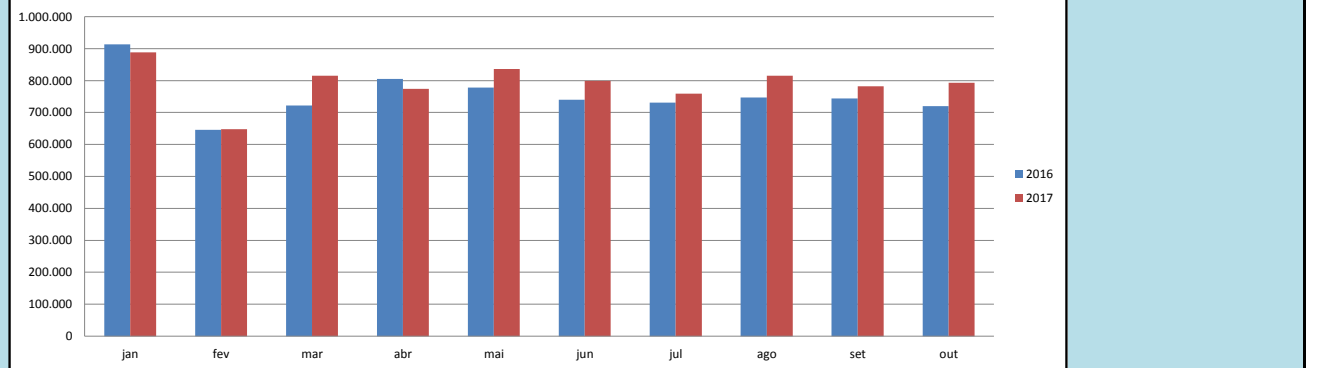
Mês	2016	2017	Real	Nominal
jan	913.085	887.836	↓ -8,52%	↓ -2,77%
fev	645.850	647.405	↓ -5,69%	↑ 0,24%
mar	721.886	814.895	↑ 6,20%	↑ 12,9%
abr	805.220	774.502	↓ -9,51%	↓ -3,81%
mai	778.270	835.796	↑ 1,04%	↑ 7,39%
jun	740.241	799.286	↑ 1,59%	↑ 7,98%
jul	730.521	759.218	↓ -2,22%	↑ 3,93%
ago	746.973	815.207	↑ 2,68%	↑ 9,13%
set	744.130	781.981	↓ -1,13%	↑ 5,09%
out	720.293	792.579	↑ 3,52%	↑ 10,0%
Total	7.546.468	7.908.705	↓ -1,40%	↑ 4,80%

Análise do Incremento Nominal e Real de 2016 com base na Inflação de 2015 (IPCA: 10,67% - R\$ mil)

	2015	2016	Real	Nominal
	8.321,25	9.347,98	↑ 1,5%	↑ 12,3%

Receita Corrente Líquida

RCL - MS (R\$ mil)



Fontes:
Dados MT, GO, DF, Centro-oeste e Brasil: Cotepe-Confaz.
Dados MS: Superintendência de Contabilidade Geral do Estado - RREO

Análise do Incremento Nominal e Real das Receitas Tributárias (ICMS, IPVA, ITCD) e da Receita Corrente Líquida (RCL)

Análise do Incremento Nominal e Real de 2017 com base na Inflação de 2016 (IPCA: 6,29% - R\$ mil)

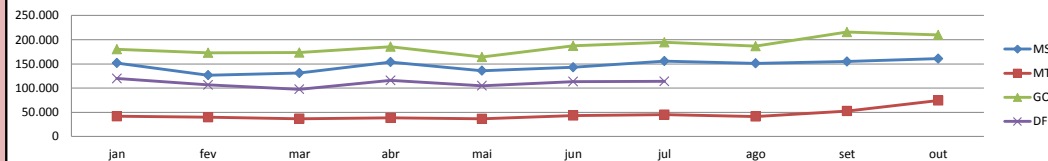
ICMS - Atacado

Mês	Mato Grosso do Sul				Mato Grosso				Goiás				Distrito Federal				Centro-Oeste				Brasil			
	2016	2017	Real	Nominal	2016	2017	Real	Nominal	2016	2017	Real	Nominal	2016	2017	Real	Nominal	2016	2017	Real	Nominal	2016	2017	Real	Nominal
jan	122.662	151.898	↑ 16,5%	↑ 23,8%	42.096	41.714	↓ -6,77%	↓ -0,91%	172.891	180.459	↓ -1,80%	↑ 4,38%	116.166	119.664	↓ -3,08%	↑ 3,01%	453.817	493.736	↑ 2,36%	↑ 8,80%	5.711.172	6.574.091	↑ 8,30%	↑ 15,1%
fev	109.502	126.733	↑ 8,89%	↑ 15,7%	31.077	39.545	↑ 19,7%	↑ 27,2%	138.097	173.052	↑ 17,9%	↑ 25,3%	94.997	106.516	↑ 5,49%	↑ 12,1%	373.674	445.847	↑ 12,3%	↑ 19,3%	4.962.246	5.568.328	↑ 5,57%	↑ 12,2%
mar	120.285	131.127	↑ 2,56%	↑ 9,0%	32.342	36.495	↑ 6,16%	↑ 12,8%	156.264	173.250	↑ 4,31%	↑ 10,9%	86.582	97.407	↑ 5,84%	↑ 12,5%	395.474	438.281	↑ 4,27%	↑ 10,8%	5.486.016	5.963.142	↑ 2,26%	↑ 8,70%
abr	135.877	153.802	↑ 6,49%	↑ 13,2%	37.788	38.315	↓ -4,61%	↑ 1,39%	169.718	185.481	↑ 2,82%	↑ 9,29%	117.099	115.817	↓ -6,95%	↓ -1,09%	460.483	493.416	↑ 0,81%	↑ 7,15%	5.748.275	6.388.724	↑ 4,56%	↑ 11,1%
mai	126.604	135.816	↑ 0,93%	↑ 7,28%	36.548	36.199	↓ -6,82%	↓ -0,95%	154.542	164.230	↓ -0,02%	↑ 6,27%	110.870	104.877	↓ -11,0%	↓ -5,41%	428.567	441.124	↓ -3,16%	↑ 2,93%	5.570.447	5.885.560	↓ -6,06%	↑ 5,66%
jun	129.903	142.975	↑ 3,55%	↑ 10,06%	39.243	43.110	↑ 3,35%	↑ 9,85%	158.413	187.280	↑ 11,2%	↑ 18,2%	116.380	113.539	↓ -8,21%	↓ -2,44%	443.940	486.905	↑ 3,19%	↑ 9,68%	5.714.500	6.391.153	↑ 5,22%	↑ 11,8%
jul	142.567	155.664	↑ 2,73%	↑ 9,19%	40.913	45.051	↑ 3,60%	↑ 10,1%	176.711	194.482	↑ 3,54%	↑ 10,1%	115.937	113.652	↓ -7,77%	↓ -1,97%	476.129	508.850	↑ 0,55%	↑ 6,87%	5.594.886	5.958.629	↑ 0,20%	↑ 6,50%
ago	147.067	151.157	↓ -3,30%	↑ 2,78%	41.097	41.384	↓ -5,26%	↑ 0,70%	172.202	186.649	↑ 1,98%	↑ 8,39%	115.937	113.652	↓ -7,77%	↓ -1,97%	465.245	379.191	↓ -23,3%	↓ -18,5%	5.728.378	6.097.759	↑ 0,15%	↑ 6,45%
set	144.291	154.767	↑ 0,91%	↑ 7,26%	50.422	52.697	↓ -1,67%	↑ 4,51%	198.522	215.789	↑ 2,27%	↑ 8,70%	115.937	113.652	↓ -7,77%	↓ -1,97%	509.555	423.254	↓ -21,9%	↓ -16,9%	58.793.842	6.396.417	↓ -89,8%	↓ -89,1%
out	140.933	160.701	↑ 7,28%	↑ 14,03%	46.547	74.395	↑ 50,4%	↑ 59,8%	174.618	209.663	↑ 13,0%	↑ 20,1%	115.937	113.652	↓ -7,77%	↓ -1,97%	469.792	444.760	↓ -10,9%	↓ -5,3%	6.100.232	5.700.904	↓ -12,1%	↓ -6,5%
Total	1.319.691	1.464.640	↑ 4,42%	↑ 10,98%	398.073	448.905	↑ 6,10%	↑ 12,8%	1.671.978	1.870.335	↑ 5,24%	↑ 11,9%	758.031	771.472	↓ -4,25%	↑ 1,77%	4.476.676	4.555.364	↓ -4,26%	↑ 1,76%	109.409.994	60.924.707	↓ -47,6%	↓ -44,3%

Análise do Incremento Nominal e Real de 2016 com base na Inflação de 2015 (IPCA: 10,67% - R\$ mil)

	2015	2016	Real	Nominal
MS	1.362.478	1.617.608	↑ 7,28%	↑ 18,7%
MT	398.920	489.792	↑ 10,9%	↑ 22,8%
GO	1.876.855	2.048.998	↓ -1,35%	↑ 9,17%
DF	1.174.211	1.320.297	↑ 1,60%	↑ 12,4%
CT-OESTE	4.812.479	5.476.713	↑ 2,83%	↑ 13,8%
BRASIL	65.257.768	122.267.418	↑ 69,3%	↑ 87,4%

ICMS - Atacado - 2017 (R\$ mil)



ICMS - Varejo

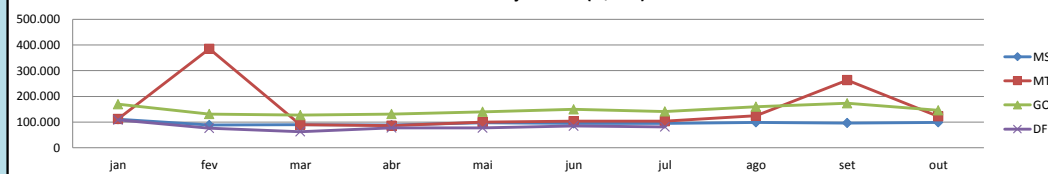
Análise do Incremento Nominal e Real de 2017 com base na Inflação de 2016 (IPCA: 6,29% - R\$ mil)

Mês	Mato Grosso do Sul				Mato Grosso				Goiás				Distrito Federal				Centro-Oeste				Brasil			
	2016	2017	Real	Nominal	2016	2017	Real	Nominal	2016	2017	Real	Nominal	2016	2017	Real	Nominal	2016	2017	Real	Nominal	2016	2017	Real	Nominal
jan	110.472	110.681	↓ -5,74%	↑ 0,19%	96.475	112.178	↑ 9,40%	↑ 16,3%	160.745	169.219	↓ -0,96%	↑ 5,27%	105.235	108.171	↓ -3,29%	↑ 2,79%	472.928	500.250	↓ -0,48%	↑ 5,78%	4.105.157	4.569.050	↑ 4,71%	↑ 11,3%
fev	87.363	88.452	↓ -4,75%	↑ 1,25%	82.036	385.038	↑ 342%	↑ 369%	130.244	131.033	↓ -5,35%	↑ 0,61%	76.918	76.053	↓ -6,98%	↓ -1,12%	376.562	385.038	↓ -3,80%	↑ 2,25%	3.132.004	3.534.517	↑ 6,17%	↑ 12,9%
mar	95.978	89.582	↓ -12,2%	↓ -6,66%	80.470	89.973	↑ 5,19%	↑ 11,8%	111.226	127.033	↑ 7,45%	↑ 14,2%	53.316	62.844	↑ 10,9%	↑ 17,9%	340.992	369.433	↑ 1,93%	↑ 8,34%	2.937.038	3.336.250	↑ 6,87%	↑ 13,6%
abr	109.108	87.985	↓ -24,1%	↓ -19,4%	83.022	85.937	↓ -2,61%	↑ 3,51%	120.018	131.388	↑ 3,00%	↑ 9,47%	66.457	77.628	↑ 9,90%	↑ 16,8%	378.606	382.940	↓ -4,84%	↑ 1,14%	3.131.292	3.325.937	↓ -0,07%	↑ 6,22%
mai	96.637	97.680	↓ -4,90%	↑ 1,08%	87.032	99.412	↑ 7,47%	↑ 14,2%	121.319	140.194	↑ 8,72%	↑ 15,6%	65.362	76.766	↑ 10,5%	↑ 17,4%	370.351	414.054	↑ 5,18%	↑ 11,8%	3.192.395	3.622.152	↑ 6,75%	↑ 13,5%
jun	95.088	94.733	↓ -6,27%	↓ -0,37%	92.147	103.131	↑ 5,30%	↑ 11,9%	127.021	149.408	↑ 10,7%	↑ 17,6%	74.400	84.754	↑ 7,18%	↑ 13,9%	388.658	432.028	↑ 4,58%	↑ 11,2%	3.437.030	3.782.894	↑ 3,55%	↑ 10,1%
jul	94.090	95.179	↓ -4,83%	↑ 1,16%	87.166	103.339	↑ 11,5%	↑ 18,6%	125.948	141.327	↑ 5,57%	↑ 12,2%	75.282	81.423	↑ 1,76%	↑ 8,16%	382.488	421.270	↑ 3,62%	↑ 10,1%	3.360.604	3.651.169	↑ 2,22%	↑ 8,65%
ago	96.590	98.921	↓ -3,65%	↑ 2,41%	88.995	124.932	↑ 32,1%	↑ 40,4%	131.406	159.700	↑ 14,3%	↑ 21,5%	115.937	113.652	↓ -7,77%	↓ -1,97%	392.490	383.554	↓ -8,06%	↓ -2,28%	3.446.652	3.792.595	↑ 3,53%	↑ 10,0%
set	91.190	96.533	↓ -0,41%	↑ 5,86%	88.879	263.505	↑ 179%	↑ 196%	124.080	173.314	↑ 31,4%	↑ 39,7%	115.937	113.652	↓ -7,77%	↓ -1,97%	371.315	533.354	↑ 35,1%	↑ 43,6%	30.796.746	3.770.709	↓ -88,5%	↓ -87,8%
out	89.122	98.900	↑ 4,40%	↑ 11,0%	96.949	122.604	↑ 19,0%	↑ 26,5%	119.975	145.573	↑ 14,2%	↑ 21,3%	115.937	113.652	↓ -7,77%	↓ -1,97%	379.224	367.078	↓ -8,93%	↓ -3,20%	3.136.300	3.257.199	↓ -2,29%	↑ 3,85%
Total	965.638	958.646	↓ -6,60%	↓ -0,72%	883.171	1.490.049	↑ 58,7%	↑ 68,7%	1.271.982	1.468.189	↑ 8,59%	↑ 15,4%	516.970	567.639	↑ 3,30%	↑ 9,80%	3.853.614	4.188.999	↑ 2,27%	↑ 8,70%	60.675.218	36.642.472	↓ -43,2%	↓ -39,6%

Análise do Incremento Nominal e Real de 2016 com base na Inflação de 2015 (IPCA: 10,67% - R\$ mil)

	2015	2016	Real	Nominal
MS	1.157.270	1.158.095	↓ -9,58%	↑ 0,07%
MT	1.080.185	1.095.076	↓ -8,40%	↑ 1,38%
GO	1.479.000	1.576.846	↓ -3,66%	↑ 6,62%
DF	971.975	898.849	↓ -16,4%	↓ -7,52%
CT-OESTE	4.688.451	4.728.883	↓ -8,86%	↑ 0,86%
BRASIL	39.804.410	67.920.322	↑ 54,18%	↑ 70,64%

ICMS - Varejo - 2017 (R\$ mil)



Fontes:
Dados MS, MT, GO, DF, Centro-oeste e Brasil: Cotepe-Confaz.

Análise do Incremento Nominal e Real das Receitas Tributárias (ICMS, IPVA, ITCD) e da Receita Corrente Líquida (RCL)

ICMS - Energia - St. Secundário

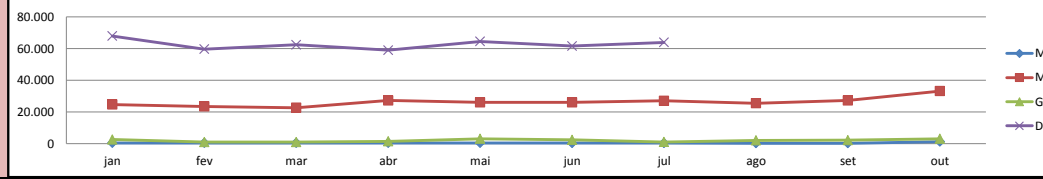
Análise do Incremento Nominal e Real de 2017 com base na Inflação de 2016 (IPCA: 6,29% - R\$ mil)

Mês	Mato Grosso do Sul				Mato Grosso				Goiás				Distrito Federal				Centro-Oeste				Brasil			
	2016	2017	Real	Nominal	2016	2017	Real	Nominal	2016	2017	Real	Nominal	2016	2017	Real	Nominal	2016	2017	Real	Nominal	2016	2017	Real	Nominal
jan	404	507	↑ 18,1%	↑ 25,5%	27.908	24.707	↓ -16,7%	↓ -11,5%	2.191	2.621	↑ 12,5%	↑ 19,6%	69.255	67.997	↓ -7,63%	↓ -1,82%	99.760	95.833	↓ -9,62%	↓ -3,94%	1.441.048	1.214.288	↓ -20,7%	↓ -15,7%
fev	4.648	502	↓ -89,8%	↓ -89,2%	28.100	23.526	↓ -21,2%	↓ -16,3%	1.937	973	↓ -52,7%	↓ -49,8%	70.679	59.764	↓ -20,4%	↓ -15,4%	105.366	84.767	↓ -24,3%	↓ -19,5%	1.273.787	1.195.951	↓ -11,7%	↓ -6,11%
mar	513	489	↓ -10,3%	↓ -4,68%	25.881	22.710	↓ -17,4%	↓ -12,3%	1.922	940	↓ -54,0%	↓ -51,1%	50.662	62.489	↑ 16,0%	↑ 23,3%	78.980	86.630	↑ 3,20%	↑ 9,69%	1.279.831	1.170.476	↓ -14,0%	↓ -8,54%
abr	1.538	505	↓ -69,1%	↓ -67,2%	26.447	27.289	↑ 2,92%	↑ 3,18%	2.262	1.456	↓ -39,4%	↓ -35,6%	65.456	58.990	↓ -15,2%	↓ -9,88%	95.704	88.241	↓ -13,3%	↓ -7,80%	1.267.945	1.252.871	↓ -7,04%	↓ -1,19%
mai	258	507	↑ 84,9%	↑ 96,5%	26.060	26.027	↓ -6,04%	↓ -0,13%	2.393	3.081	↑ 21,1%	↑ 28,8%	67.098	64.598	↓ -9,42%	↓ -3,73%	95.809	94.214	↓ -7,48%	↓ -1,66%	1.288.406	1.190.119	↓ -13,1%	↓ -7,63%
jun	272	376	↑ 30,1%	↑ 38,2%	24.971	26.091	↑ 1,70%	↑ 4,49%	1.779	2.360	↑ 24,8%	↑ 32,7%	62.221	61.634	↓ -6,81%	↓ -0,94%	89.245	90.463	↑ 4,63%	↑ 1,36%	1.138.385	1.060.557	↓ -12,3%	↓ -6,84%
jul	329	349	↑ 0,20%	↑ 6,08%	24.425	27.104	↑ 4,40%	↑ 11,0%	1.300	1.121	↓ -18,9%	↓ -13,8%	63.789	63.942	↑ 5,69%	↑ 0,24%	89.846	92.517	↑ 3,12%	↑ 2,97%	1.250.486	1.324.128	↑ 0,38%	↑ 5,89%
ago	291	301	↑ 2,68%	↑ 3,44%	23.105	25.504	↑ 3,85%	↑ 10,4%	2.327	2.055	↓ -16,9%	↓ -11,7%	89.365	89.635	↑ 2,76%	↑ 0,3%	89.365	27.861	↓ -70,7%	↓ -68,8%	1.161.987	1.145.909	↓ -7,22%	↓ -1,38%
set	686	236	↓ -67,6%	↓ -65,6%	24.394	27.305	↑ 5,31%	↑ 11,9%	1.776	2.174	↑ 15,2%	↑ 22,4%	32.479	29.716	↓ -13,9%	↓ -8,51%	32.479	29.716	↓ -13,9%	↓ -8,51%	3.395.973	1.120.153	↓ -69,0%	↓ -67,0%
out	423	1.309	↑ 191,1%	↑ 209,5%	24.899	33.216	↑ 25,51%	↑ 33,4%	1.528	3.062	↑ 88,5%	↑ 100%	139.473	139.473	0%	0%	139.473	37.588	↓ -74,6%	↓ -73,0%	887.696	729.355	↓ -22,7%	↓ -17,8%
Total	9.362	5.081	↓ -48,9%	↓ -45,7%	256.190	263.479	↑ 3,24%	↑ 2,85%	19.415	19.843	↑ 3,84%	↑ 2,20%	449.160	439.414	↓ -7,96%	↓ -2,17%	916.027	727.830	↓ -25,2%	↓ -20,5%	14.385.544	11.403.807	↓ -25,4%	↓ -20,7%

Análise do Incremento Nominal e Real de 2016 com base na Inflação de 2015 (IPCA: 10,67% - R\$ mil)

	2015	2016	Real	Nominal
MS	2.646	11.224	↑ 283%	↑ 324%
MT	308.767	313.480	↓ -8,26%	↑ 1,53%
GO	31.571	33.172	↓ -5,06%	↑ 5,07%
DF	666.281	757.785	↑ 2,77%	↑ 13,7%
CT-OESTE	1.009.285	1.115.679	↑ 0,12%	↑ 10,5%
BRASIL	14.248.566	16.964.067	↑ 7,58%	↑ 19,1%

ICMS - Energia - St. Secundário - 2017 (R\$ mil)



ICMS - Energia - St. Terciário

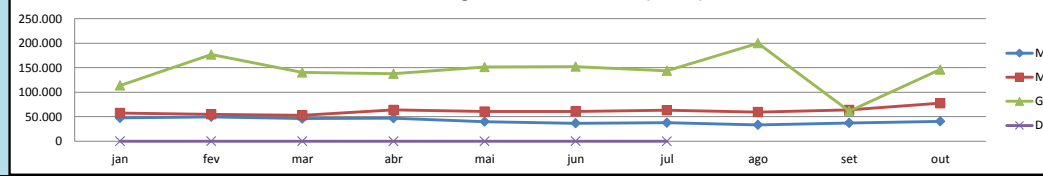
Análise do Incremento Nominal e Real de 2017 com base na Inflação de 2016 (IPCA: 6,29% - R\$ mil)

Mês	Mato Grosso do Sul				Mato Grosso				Goiás				Distrito Federal				Centro-Oeste				Brasil			
	2016	2017	Real	Nominal	2016	2017	Real	Nominal	2016	2017	Real	Nominal	2016	2017	Real	Nominal	2016	2017	Real	Nominal	2016	2017	Real	Nominal
jan	48.898	47.394	↓ -8,81%	↓ -3,08%	65.119	57.650	↓ -16,7%	↓ -11,5%	193.774	113.839	↓ -44,7%	↓ -41,3%	65	94	↑ 36,1%	↑ 44,6%	307.858	218.979	↓ -33,1%	↓ -28,9%	3.041.754	2.735.583	↓ -15,4%	↓ -10,1%
fev	49.842	49.717	↓ -6,15%	↓ -0,25%	65.568	54.894	↓ -21,2%	↓ -16,3%	154.079	176.715	↑ 7,90%	↑ 14,7%	0	177	↑ 178%	↑ 178%	269.489	281.504	↓ -1,72%	↑ 4,46%	3.063.723	2.726.267	↓ -16,3%	↓ -11,0%
mar	49.827	46.208	↓ -12,8%	↓ -7,26%	60.389	52.991	↓ -17,4%	↓ -12,3%	193.626	140.081	↓ -31,9%	↓ -27,7%	23	71	↑ 190%	↑ 209%	303.866	239.353	↓ -25,9%	↓ -21,2%	2.875.746	2.479.587	↓ -18,9%	↓ -13,8%
abr	49.450	46.782	↓ -11,0%	↓ -5,40%	61.710	63.674	↓ -2,92%	↑ 3,18%	154.804	137.592	↓ -16,4%	↓ -11,1%	28	29	↓ -2,56%	↑ 3,57%	265.993	248.079	↓ -12,3%	↓ -6,73%	2.863.535	2.926.467	↑ 3,85%	↑ 2,20%
mai	48.472	39.982	↓ -22,4%	↓ -17,5%	60.807	60.730	↓ -6,04%	↓ -0,13%	180.189	151.352	↓ -21,0%	↓ -16,0%	29	33	↑ 7,06%	↑ 13,8%	289.499	252.098	↓ -18,1%	↓ -12,9%	2.763.993	2.650.218	↓ -9,79%	↓ -4,12%
jun	43.794	36.831	↓ -20,9%	↓ -15,9%	58.266	60.879	↓ -1,70%	↑ 4,48%	190.970	152.260	↓ -25,0%	↓ -20,3%	29	92	↑ 198%	↑ 217%	293.061	250.063	↓ -19,7%	↓ -14,7%	2.581.699	2.429.468	↓ -11,5%	↓ -5,90%
jul	38.281	37.623	↓ -7,53%	↓ -1,72%	56.993	63.243	↑ 4,40%	↑ 11,0%	166.141	143.700	↓ -18,6%	↓ -13,5%	30	33	↑ 3,49%	↑ 10,0%	261.446	244.600	↓ -12,0%	↓ -6,44%	2.758.933	2.434.627	↓ -17,0%	↓ -11,8%
ago	38.752	33.391	↓ -18,9%	↓ -13,8%	53.912	59.509	↑ 3,85%	↑ 10,4%	122.553	199.758	↑ 53,4%	↑ 63,0%	215.246	215.246	0%	0%	215.246	292.659	↑ 27,9%	↑ 36,0%	2.212.451	2.377.342	↑ 1,09%	↑ 7,45%
set	39.702	37.426	↓ -11,3%	↓ -5,73%	56.920	63.712	↑ 5,31%	↑ 11,9%	221.042	61.482	↓ -73,8%	↓ -72,2%	317.696	162.621	↓ -51,8%	↓ -48,8%	317.696	162.621	↓ -51,8%	↓ -48,8%	26.713.479	2.318.076	↓ -91,8%	↓ -91,3%
out	40.397	40.744	↑ 5,11%	↑ 0,86%	58.097	77.505	↑ 25,5%	↑ 33,4%	151.002	146.066	↓ -8,99%	↓ -3,27%	249.656	249.656	0%	0%	249.656	264.315	↑ 0,39%	↑ 5,87%	2.728.203	2.594.557	↓ -10,5%	↓ -4,90%
Total	447.415	416.098	↓ -12,5%	↓ -7,00%	597.781	614.787	↑ 3,24%	↑ 2,84%	1.728.180	1.422.845	↓ -22,5%	↓ -17,7%	204	529	↑ 144%	↑ 159%	2.773.810	2.454.271	↓ -16,8%	↓ -11,5%	51.603.516	25.672.192	↓ -53,2%	↓ -50,3%

Análise do Incremento Nominal e Real de 2016 com base na Inflação de 2015 (IPCA: 10,67% - R\$ mil)

	2015	2016	Real	Nominal
MS	515.365	533.221	↓ -6,51%	↑ 3,46%
MT	720.464	731.458	↓ -8,26%	↑ 1,53%
GO	1.994.234	2.039.566	↓ -7,59%	↑ 2,27%
DF	1.100	851	↓ -30,1%	↓ -22,6%
CT-OESTE	3.231.185	3.305.114	↓ -7,57%	↑ 2,29%
BRASIL	30.452.709	56.304.488	↑ 67,1%	↑ 84,9%

ICMS - Energia - St. Terciário - 2017 (R\$ mil)



Fontes:

Dados MS, MT, GO, DF, Centro-oeste e Brasil: Cotepe-Confaz.

Análise do Incremento Nominal e Real das Receitas Tributárias (ICMS, IPVA, ITCD) e da Receita Corrente Líquida (RCL)

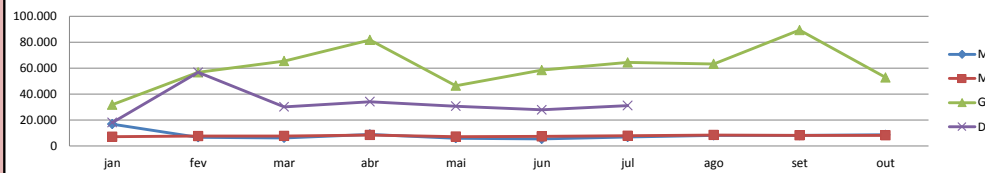
Análise do Incremento Nominal e Real de 2017 com base na Inflação de 2016 (IPCA: 6,29% - R\$ mil)

Mês	Mato Grosso do Sul				Mato Grosso				Goiás				Distrito Federal				Centro-Oeste				Brasil			
	2016	2017	Real	Nominal	2016	2017	Real	Nominal	2016	2017	Real	Nominal	2016	2017	Real	Nominal	2016	2017	Real	Nominal	2016	2017	Real	Nominal
jan	9.147	16.911	↑ 73,9%	↑ 84,9%	6.794	7.075	↓ -2,03%	↑ 4,14%	49.906	31.867	↓ -39,9%	↓ -36,1%	21.937	18.090	↓ -22,4%	↓ -17,5%	87.786	73.945	↓ -20,8%	↓ -15,8%	3.966.749	3.658.505	↓ -13,2%	↓ -7,7%
fev	8.161	6.738	↓ -22,3%	↓ -17,4%	6.993	7.590	↑ 2,11%	↑ 8,54%	21.747	56.852	↑ 146%	↑ 161%	22.003	56.852	↑ 143%	↑ 158,4%	58.906	105.522	↑ 68,5%	↑ 79,1%	3.860.221	3.072.363	↓ -25,1%	↓ -20,4%
mar	8.866	6.289	↓ -33,3%	↓ -29,1%	7.891	7.768	↓ -7,38%	↓ -1,56%	23.894	65.604	↑ 158%	↑ 175%	18.495	30.290	↑ 54,1%	↑ 63,8%	59.148	109.953	↑ 74,9%	↑ 85,9%	3.825.929	3.688.307	↓ -9,30%	↓ -3,60%
abr	7.328	8.992	↑ 15,4%	↑ 22,7%	7.989	8.484	↓ -0,09%	↑ 6,20%	42.936	81.864	↑ 79,4%	↑ 90,7%	23.337	34.156	↑ 37,7%	↑ 46,4%	81.592	133.498	↑ 53,9%	↑ 63,6%	3.925.690	4.001.771	↓ -4,09%	↑ 1,94%
mai	8.017	6.015	↓ -29,4%	↓ -25,0%	8.222	7.286	↓ -16,6%	↓ -11,4%	13.790	46.535	↑ 217%	↑ 237%	25.950	30.704	↑ 11,3%	↑ 18,3%	55.980	90.542	↑ 52,2%	↑ 61,7%	3.934.813	3.543.235	↓ -15,3%	↓ -10,0%
jun	6.808	5.409	↓ -25,3%	↓ -20,5%	7.486	7.327	↓ -7,92%	↓ -2,12%	17.578	58.534	↑ 213%	↑ 233%	25.100	27.907	↑ 4,60%	↑ 11,2%	56.973	99.179	↑ 63,8%	↑ 74,1%	3.695.224	3.625.274	↓ -7,70%	↓ -1,89%
jul	7.439	6.907	↓ -12,6%	↓ -7,15%	8.278	7.913	↓ -10,1%	↓ -4,41%	28.926	64.509	↑ 110%	↑ 123%	24.259	31.281	↑ 21,3%	↑ 28,9%	68.903	110.611	↑ 51,0%	↑ 60,5%	3.674.641	3.682.008	↓ -5,73%	↑ 0,20%
ago	9.267	8.156	↓ -17,2%	↓ -12,0%	7.949	8.461	↑ 0,14%	↑ 6,44%	25.766	63.404	↑ 132%	↑ 146%	28.266	30.704	↑ 11,3%	↑ 18,3%	63.896	80.023	↑ 17,8%	↑ 25,2%	3.762.905	3.800.923	↓ -4,97%	↑ 1,01%
set	8.329	8.242	↓ -6,90%	↓ -1,04%	7.851	8.300	↓ -0,54%	↑ 5,72%	32.419	89.447	↑ 160%	↑ 176%	32.419	89.447	↑ 160%	↑ 176%	72.474	105.990	↑ 37,6%	↑ 46,2%	21.239.068	3.686.161	↓ -83,7%	↓ -82,6%
out	11.632	8.588	↓ -30,5%	↓ -26,2%	8.523	8.241	↓ -9,03%	↓ -3,31%	39.114	52.865	↑ 27,2%	↑ 35,2%	39.114	52.865	↑ 27,2%	↑ 35,2%	68.972	69.695	↓ -4,93%	↑ 1,05%	3.172.719	2.877.855	↓ -14,7%	↓ -9,29%
Total	84.994	82.247	↓ -8,96%	↓ -3,23%	77.976	78.445	↓ -5,35%	↑ 0,60%	296.076	611.481	↑ 94,3%	↑ 107%	161.081	229.280	↑ 33,9%	↑ 42,3%	674.630	978.958	↑ 36,5%	↑ 45,1%	55.057.959	35.636.402	↓ -39,1%	↓ -35,3%

Análise do Incremento Nominal e Real de 2016 com base na Inflação de 2015 (IPCA: 10,67% - R\$ mil)

	2015	2016	Real	Nominal
MS	109.598	108.775	↓ -10,3%	↓ -0,75%
MT	78.589	94.087	↑ 8,2%	↑ 19,7%
GO	581.913	395.281	↓ -38,6%	↓ -32,1%
DF	215.818	277.312	↑ 16,1%	↑ 28,5%
CT-OESTE	985.931	875.475	↓ -19,8%	↓ -11,2%
BRASIL	41.576.448	62.296.195	↑ 35,4%	↑ 49,84%

ICMS - Petr, Comb e Lub - St. Sec. - 2017 (R\$ mil)



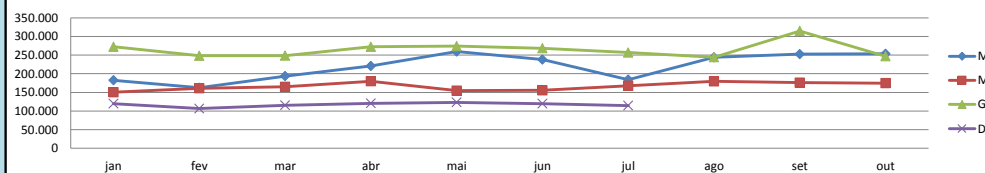
Análise do Incremento Nominal e Real de 2017 com base na Inflação de 2016 (IPCA: 6,29% - R\$ mil)

Mês	Mato Grosso do Sul				Mato Grosso				Goiás				Distrito Federal				Centro-Oeste				Brasil			
	2016	2017	Real	Nominal	2016	2017	Real	Nominal	2016	2017	Real	Nominal	2016	2017	Real	Nominal	2016	2017	Real	Nominal	2016	2017	Real	Nominal
jan	212.704	182.682	↓ -19,2%	↓ -14,1%	144.195	150.158	↓ -2,03%	↑ 4,14%	275.047	272.399	↓ -6,82%	↓ -0,96%	113.675	119.860	↓ -0,80%	↑ 5,44%	745.622	725.100	↓ -8,51%	↓ -2,75%	2.309.035	2.643.257	↑ 7,70%	↑ 14,5%
fev	227.391	162.504	↓ -32,8%	↓ -28,5%	148.413	161.080	↑ 2,11%	↑ 8,53%	239.822	248.507	↓ -2,51%	↑ 3,62%	113.989	106.461	↓ -12,1%	↓ -6,60%	729.616	678.554	↓ -12,5%	↓ -7,00%	2.422.730	2.547.546	↓ -1,07%	↑ 5,15%
mar	225.562	193.571	↓ -19,3%	↓ -14,2%	167.484	164.858	↓ -7,39%	↓ -1,57%	269.243	248.740	↓ -13,1%	↓ -7,62%	87.705	115.576	↑ 24,0%	↑ 31,8%	749.995	722.746	↓ -9,34%	↓ -3,63%	2.297.821	2.580.917	↑ 5,67%	↑ 12,3%
abr	237.481	220.904	↓ -12,5%	↓ -6,98%	169.563	180.065	↓ -0,09%	↑ 6,19%	303.872	272.185	↓ -15,7%	↓ -10,4%	111.162	120.756	↑ 2,20%	↑ 8,63%	822.079	793.911	↓ -9,14%	↓ -3,43%	2.422.316	2.611.039	↑ 1,41%	↑ 7,79%
mai	214.638	259.689	↑ 13,8%	↑ 21,0%	174.492	154.628	↓ -16,6%	↓ -11,4%	305.991	274.136	↓ -15,7%	↓ -10,4%	124.528	123.264	↓ -6,87%	↓ -1,02%	819.651	811.719	↓ -6,83%	↓ -0,97%	2.442.065	3.059.827	↑ 17,9%	↑ 25,3%
jun	201.076	238.063	↑ 11,4%	↑ 18,4%	158.869	155.511	↓ -7,91%	↓ -2,11%	295.846	268.674	↓ -14,6%	↓ -9,18%	131.782	119.780	↓ -14,5%	↓ -9,11%	787.574	782.031	↓ -6,58%	↓ -0,70%	2.457.385	2.961.444	↑ 13,4%	↑ 20,5%
jul	199.224	184.098	↓ -13,1%	↓ -7,59%	175.686	167.935	↓ -10,1%	↓ -4,41%	287.944	256.888	↓ -16,1%	↓ -10,8%	126.032	114.653	↓ -14,4%	↓ -9,03%	788.888	723.575	↓ -13,7%	↓ -8,28%	2.417.074	2.760.429	↑ 7,45%	↑ 14,2%
ago	212.328	244.015	↑ 8,12%	↑ 14,9%	168.712	179.581	↑ 0,14%	↑ 6,44%	293.706	244.269	↓ -21,8%	↓ -16,8%	293.706	244.269	↓ -21,8%	↓ -16,8%	792.783	667.866	↓ -20,7%	↓ -15,8%	2.732.353	2.740.481	↓ -5,64%	↑ 0,30%
set	221.450	252.436	↑ 7,25%	↑ 14,0%	166.615	176.144	↓ -0,54%	↑ 5,72%	293.635	315.134	↑ 0,97%	↑ 7,32%	293.635	315.134	↑ 0,97%	↑ 7,32%	799.499	743.715	↓ -12,5%	↓ -6,98%	7.447.677	2.874.712	↓ -63,7%	↓ -61,4%
out	214.329	253.625	↑ 11,3%	↑ 18,3%	180.896	174.902	↓ -9,04%	↓ -3,31%	281.961	247.071	↓ -17,6%	↓ -12,4%	281.961	247.071	↓ -17,6%	↓ -12,4%	795.096	675.598	↓ -20,1%	↓ -15,0%	2.228.769	2.253.805	↓ -4,86%	↑ 1,12%
Total	2.166.183	2.191.587	↓ -4,81%	↑ 1,17%	1.654.925	1.664.862	↓ -5,35%	↑ 0,60%	2.847.067	2.648.003	↓ -12,5%	↓ -6,99%	808.873	820.350	↓ -4,58%	↑ 1,42%	7.830.803	7.324.815	↓ -12,0%	↓ -6,46%	29.177.225	27.033.457	↓ -12,8%	↓ -7,35%

Análise do Incremento Nominal e Real de 2016 com base na Inflação de 2015 (IPCA: 10,67% - R\$ mil)

	2015	2016	Real	Nominal
MS	2.645.662	2.607.254	↓ -11,0%	↓ -1,45%
MT	1.667.941	1.996.854	↑ 8,18%	↑ 19,72%
GO	2.978.982	3.402.205	↑ 3,20%	↑ 14,21%
DF	1.206.566	1.400.596	↑ 4,9%	↑ 16,08%
CT-OESTE	8.499.168	9.406.925	↑ 0,01%	↑ 10,68%
BRASIL	26.906.573	34.240.195	↑ 15,0%	↑ 27,26%

ICMS - Petr, Comb e Lub - St. Terc. - 2017 (R\$ mil)



Fontes:

Dados MS, MT, GO, DF, Centro-oeste e Brasil: Cotepe-Confaz.

Análise do Incremento Nominal e Real das Receitas Tributárias (ICMS, IPVA, ITCD) e da Receita Corrente Líquida (RCL)

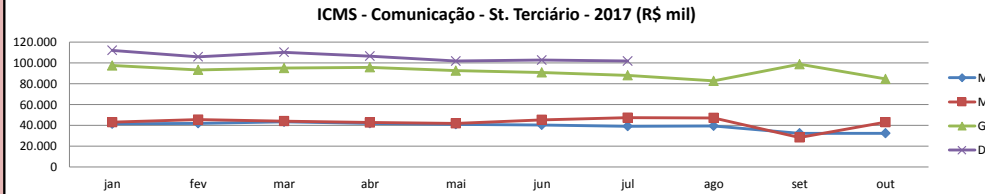
ICMS - Comunicação - St. Terciário

Análise do Incremento Nominal e Real de 2017 com base na Inflação de 2016 (IPCA: 6,29% - R\$ mil)

Mês	Mato Grosso do Sul				Mato Grosso				Goiás				Distrito Federal				Centro-Oeste				Brasil			
	2016	2017	Real	Nominal	2016	2017	Real	Nominal	2016	2017	Real	Nominal	2016	2017	Real	Nominal	2016	2017	Real	Nominal	2016	2017	Real	Nominal
jan	43.628	41.558	-10,4%	-4,74%	41.654	43.117	-2,61%	3,51%	96.620	97.587	-4,98%	1,00%	84.401	112.259	25,1%	33,0%	266.305	294.523	4,05%	10,6%	2.888.263	2.955.480	-3,73%	2,33%
fev	39.286	41.987	0,55%	6,88%	41.501	45.582	3,33%	9,83%	81.683	93.393	7,57%	14,3%	100.260	106.113	-0,43%	5,84%	262.731	287.077	2,80%	9,27%	2.892.062	2.971.781	-3,32%	2,76%
mar	39.636	43.336	2,86%	9,33%	42.468	44.168	-2,15%	4,00%	87.056	95.097	2,77%	9,24%	81.166	110.437	28,0%	36,1%	250.327	293.400	10,1%	17,1%	2.896.019	2.894.711	-5,96%	-0,05%
abr	40.227	42.005	-1,76%	4,42%	42.830	42.775	-6,04%	-0,13%	90.544	95.905	-0,35%	5,92%	110.157	106.638	-8,92%	-3,19%	283.760	287.325	-4,74%	1,26%	2.858.949	2.906.454	-4,35%	1,66%
mai	40.930	41.125	-5,47%	0,48%	43.132	41.973	-8,45%	-2,69%	91.480	92.724	-4,64%	1,36%	126.901	101.878	-24,5%	-19,7%	302.444	277.701	-13,6%	-8,18%	2.932.200	3.003.949	-3,62%	2,45%
jun	40.702	40.459	-6,48%	-0,60%	41.846	45.341	1,94%	8,35%	89.863	91.038	-4,69%	1,31%	111.548	102.861	-13,2%	-7,79%	283.960	279.700	-7,33%	-1,50%	2.914.662	2.971.349	-4,09%	1,94%
jul	39.643	39.239	-6,88%	-1,02%	42.788	47.350	4,11%	10,7%	86.909	88.124	-4,60%	1,40%	110.692	101.823	-13,5%	-8,01%	280.034	276.537	-7,09%	-1,25%	2.890.786	2.805.582	-8,69%	-2,95%
ago	39.942	39.475	-7,02%	-1,17%	41.391	47.292	7,50%	14,3%	86.949	82.811	-10,4%	-4,76%					275.169	169.579	-42,0%	-38,4%	2.858.338	2.618.443	-13,8%	-8,39%
set	39.537	32.516	-22,6%	-17,8%	41.329	28.475	-35,2%	-31,1%	86.099	98.865	8,03%	14,8%					274.507	159.857	-45,2%	-41,8%	32.923.712	2.655.405	-92,4%	-91,9%
out	40.125	32.487	-23,8%	-19,0%	41.340	43.124	-1,86%	4,32%	85.376	84.623	-6,75%	-0,88%					268.984	160.235	-44,0%	-40,4%	2.602.465	2.368.330	-14,4%	-9,00%
Total	403.656	394.187	-8,12%	-2,35%	420.279	429.197	-3,92%	2,12%	882.579	920.167	-1,91%	4,26%	725.125	742.009	-3,73%	2,33%	2.748.221	2.485.574	-14,9%	-9,56%	58.657.456	28.151.484	-54,8%	-52,0%

Análise do Incremento Nominal e Real de 2016 com base na Inflação de 2015 (IPCA: 10,67% - R\$ mil)

	2015	2016	Real	Nominal
MS	460.215	482.857	-5,20%	4,92%
MT	489.582	501.018	-7,53%	2,34%
GO	1.047.168	1.053.481	-9,10%	0,60%
DF	1.053.296	1.256.836	7,82%	19,3%
CT-OESTE	3.050.281	3.294.209	-2,42%	8,00%
BRASIL	34.398.138	63.973.920	68,0%	86,0%



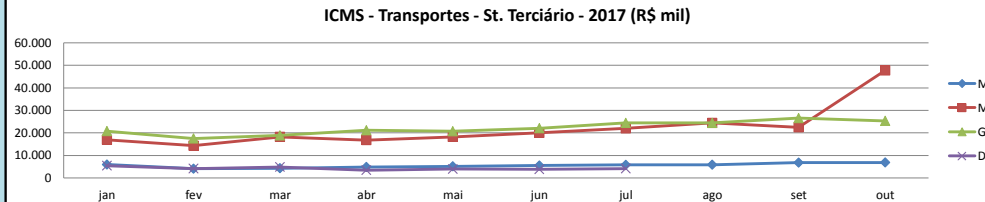
ICMS - Transportes - St. Terciário

Análise do Incremento Nominal e Real de 2017 com base na Inflação de 2016 (IPCA: 6,29% - R\$ mil)

Mês	Mato Grosso do Sul				Mato Grosso				Goiás				Distrito Federal				Centro-Oeste				Brasil			
	2016	2017	Real	Nominal	2016	2017	Real	Nominal	2016	2017	Real	Nominal	2016	2017	Real	Nominal	2016	2017	Real	Nominal	2016	2017	Real	Nominal
jan	4.636	5.931	20,4%	27,9%	17.241	16.990	-7,29%	-1,46%	21.900	20.782	-10,7%	-5,11%	4.443	5.448	15,4%	22,6%	48.221	49.152	-4,10%	1,93%	603.822	645.976	0,65%	6,98%
fev	5.273	4.069	-27,4%	-22,8%	18.683	14.319	-27,9%	-23,4%	18.117	17.540	-8,91%	-3,18%	3.860	4.184	1,98%	8,39%	45.934	40.114	-17,8%	-12,7%	564.844	447.214	-25,5%	-20,8%
mar	5.072	4.275	-20,7%	-15,7%	17.945	18.270	-4,21%	1,81%	18.511	18.906	-3,91%	2,13%	2.502	4.864	82,9%	94,4%	44.031	46.316	-1,04%	5,19%	553.315	738.900	25,6%	33,5%
abr	4.356	4.893	5,68%	12,3%	17.441	16.825	-9,24%	-3,53%	18.944	21.185	5,21%	11,8%	3.161	3.443	2,48%	8,92%	43.904	46.347	-0,68%	5,56%	576.412	605.860	-1,11%	5,11%
mai	5.069	5.128	-4,82%	1,16%	19.709	18.269	-12,8%	-7,31%	19.711	20.741	-1,00%	5,23%	3.658	3.970	2,11%	8,53%	48.148	48.109	-5,99%	-0,08%	605.126	632.838	-1,61%	4,58%
jun	3.922	5.495	31,8%	40,1%	24.597	19.996	-23,5%	-18,7%	21.574	22.097	-3,64%	2,42%	3.882	3.808	-7,71%	-1,91%	53.976	51.397	-10,4%	-4,78%	587.207	664.593	6,48%	13,2%
jul	4.091	5.778	32,9%	41,2%	31.516	22.041	-34,2%	-30,1%	22.566	24.433	1,87%	8,27%	3.833	4.193	2,92%	9,39%	62.007	56.446	-14,4%	-8,97%	598.485	628.449	-1,21%	5,01%
ago	4.677	5.870	18,1%	25,5%	26.778	24.416	-14,2%	-8,82%	24.058	24.408	-4,55%	1,45%					59.788	54.695	-13,9%	-8,52%	634.151	662.136	-1,77%	4,41%
set	4.421	6.801	44,7%	53,8%	23.958	22.505	-11,6%	-6,06%	23.629	26.534	5,65%	12,3%					56.003	55.841	-6,19%	-0,29%	6.256.311	668.375	-89,9%	-89,3%
out	4.393	6.846	46,6%	55,8%	21.736	47.735	107%	120%	22.372	25.317	6,47%	13,2%					52.485	79.899	43,22%	52,23%	615.847	596.234	-8,91%	-3,18%
Total	45.910	55.086	12,9%	20,0%	219.604	221.366	-5,16%	0,80%	211.382	221.943	-1,22%	5,00%	25.339	29.910	11,05%	18,04%	514.497	528.316	-3,39%	2,69%	11.595.520	6.290.575	-49,0%	-45,7%

Análise do Incremento Nominal e Real de 2016 com base na Inflação de 2015 (IPCA: 10,67% - R\$ mil)

	2015	2016	Real	Nominal
MS	57.420	54.883	-13,6%	-4,42%
MT	209.706	260.610	12,3%	24,3%
GO	249.097	257.357	-6,65%	3,32%
DF	50.853	45.492	-19,2%	-10,5%
CT-OESTE	567.095	618.357	-1,47%	9,04%
BRASIL	7.400.971	12.781.104	56,0%	72,7%



Fontes:
Dados MS, MT, GO, DF, Centro-oeste e Brasil: Cotepe-Confaz.

Análise do Incremento Nominal e Real das Receitas Tributárias (ICMS, IPVA, ITCD) e da Receita Corrente Líquida (RCL)

ICMS - Outros - St. Terciário

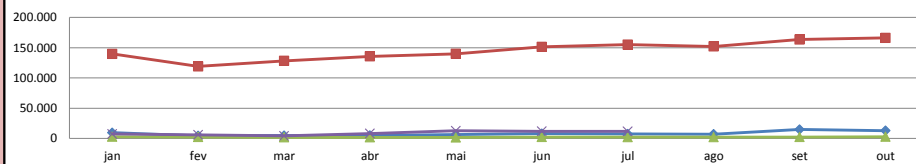
Análise do Incremento Nominal e Real de 2017 com base na Inflação de 2016 (IPCA: 6,29% - R\$ mil)

Mês	Mato Grosso do Sul				Mato Grosso				Goiás				Distrito Federal				Centro-Oeste				Brasil			
	2016	2017	Real	Nominal	2016	2017	Real	Nominal	2016	2017	Real	Nominal	2016	2017	Real	Nominal	2016	2017	Real	Nominal	2016	2017	Real	Nominal
jan	4.396	9.356	↑ 100%	↑ 113%	146.806	139.763	↓ -10,4%	↓ -4,80%	1.467	2.803	↑ 79,8%	↑ 91,1%	15.083	7.398	↓ -53,9%	↓ -51,0%	167.752	159.321	↓ -10,6%	↓ -5,03%	1.009.157	876.411	↓ -18,3%	↓ -13,2%
fev	5.583	4.375	↓ -26,3%	↓ -21,6%	118.773	119.116	↓ -5,65%	↑ 0,29%	1.140	2.332	↑ 92,5%	↑ 105%	12.829	6.124	↓ -55,1%	↓ -52,3%	138.327	131.948	↓ -10,3%	↓ -4,61%	924.448	733.861	↓ -25,3%	↓ -20,6%
mar	5.882	4.763	↓ -23,8%	↓ -19,0%	121.293	128.387	↓ -0,42%	↑ 5,85%	1.111	1.774	↑ 50,2%	↑ 59,7%	12.459	4.274	↓ -67,7%	↓ -65,7%	140.747	139.200	↓ -6,95%	↓ -1,10%	1.043.996	792.147	↓ -28,6%	↓ -24,1%
abr	5.005	5.063	↓ -4,83%	↑ 1,16%	130.060	135.701	↓ -1,84%	↑ 4,34%	1.388	1.655	↑ 12,2%	↑ 19,2%	15.536	8.117	↓ -50,8%	↓ -47,8%	151.991	150.538	↓ -6,82%	↓ -0,96%	973.424	825.626	↓ -20,2%	↓ -15,2%
mai	4.728	6.197	↑ 23,3%	↑ 31,1%	133.655	140.022	↓ -1,44%	↑ 4,76%	1.162	1.579	↑ 27,8%	↑ 35,9%	13.246	12.654	↓ -10,1%	↓ -4,47%	152.792	160.454	↓ -1,20%	↑ 5,01%	906.990	822.083	↓ -14,7%	↓ -9,36%
jun	5.656	7.836	↑ 30,3%	↑ 38,5%	141.350	151.499	↑ 0,84%	↑ 7,18%	1.555	2.234	↑ 35,2%	↑ 43,7%	13.047	11.721	↓ -15,5%	↓ -10,2%	161.609	173.292	↑ 0,88%	↑ 7,23%	995.227	836.644	↓ -20,9%	↓ -15,9%
jul	7.869	7.350	↓ -12,1%	↓ -6,60%	140.988	155.026	↑ 3,45%	↑ 10,0%	2.510	2.123	↓ -20,4%	↓ -15,4%	27.038	11.646	↓ -59,5%	↓ -56,9%	178.407	176.147	↓ -7,11%	↓ -1,27%	968.120	849.739	↓ -17,4%	↓ -12,2%
ago	6.877	7.199	↓ -1,51%	↑ 4,68%	139.675	152.280	↑ 2,57%	↑ 9,02%	3.465	1.960	↓ -46,8%	↓ -43,4%	1.960	1.960	↓ -46,8%	↓ -43,4%	166.089	161.440	↓ -8,55%	↓ -2,80%	859.143	1.201.278	↑ 31,5%	↑ 39,8%
set	5.716	14.825	↑ 144%	↑ 159%	137.958	163.522	↑ 11,5%	↑ 18,5%	2.069	2.275	↑ 3,45%	↑ 9,96%	161.564	180.623	↑ 5,18%	↑ 11,8%	161.564	180.623	↑ 5,18%	↑ 11,8%	13.213.657	920.759	↓ -93,4%	↓ -93,0%
out	6.394	13.027	↑ 91,7%	↑ 104%	145.376	166.316	↑ 7,63%	↑ 14,4%	2.799	2.788	↓ -6,29%	↓ -0,39%	161.044	182.132	↑ 6,40%	↑ 13,1%	161.044	182.132	↑ 6,40%	↑ 13,1%	790.029	798.503	↓ -4,91%	↑ 1,07%
Total	58.106	79.991	↑ 29,5%	↑ 37,7%	1.355.934	1.451.632	↑ 0,72%	↑ 7,06%	18.666	21.523	↑ 8,48%	↑ 15,3%	109.238	61.934	↓ -46,7%	↓ -43,3%	1.580.322	1.615.095	↓ -3,85%	↑ 2,20%	21.684.191	8.657.051	↓ -62,4%	↓ -60,1%

Análise do Incremento Nominal e Real de 2016 com base na Inflação de 2015 (IPCA: 10,67% - R\$ mil)

	2015	2016	Real	Nominal
MS	60.379	70.944	↑ 6,17%	↑ 17,5%
MT	1.602.745	1.646.215	↓ -7,19%	↑ 2,71%
GO	17.532	24.394	↑ 25,7%	↑ 39,1%
DF	106.680	163.247	↑ 38,3%	↑ 53,0%
CT-OESTE	1.787.351	1.904.820	↓ -3,70%	↑ 6,57%
BRASIL	12.462.124	23.270.366	↑ 68,7%	↑ 86,7%

ICMS - Outros - St. Terciário - 2017 (R\$ mil)



ICMS - Setor Primário

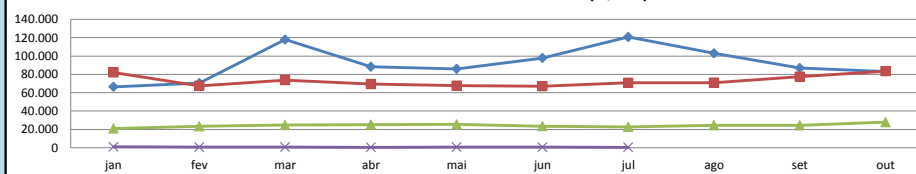
Análise do Incremento Nominal e Real de 2017 com base na Inflação de 2016 (IPCA: 6,29% - R\$ mil)

Mês	Mato Grosso do Sul				Mato Grosso				Goiás				Distrito Federal				Centro-Oeste				Brasil			
	2016	2017	Real	Nominal	2016	2017	Real	Nominal	2016	2017	Real	Nominal	2016	2017	Real	Nominal	2016	2017	Real	Nominal	2016	2017	Real	Nominal
jan	55.406	66.404	↑ 12,8%	↑ 19,8%	82.129	82.182	↓ -5,86%	↑ 0,06%	26.716	21.116	↓ -25,6%	↓ -21,0%	869	970	↑ 5,02%	↑ 11,6%	165.121	170.674	↓ -2,75%	↑ 3,36%	481.781	463.573	↓ -9,47%	↓ -3,78%
fev	76.046	70.400	↓ -12,9%	↓ -7,42%	72.981	67.472	↓ -13,0%	↓ -7,55%	30.568	23.382	↓ -28,0%	↓ -23,5%	1.821	625	↓ -67,7%	↓ -65,7%	181.418	161.881	↓ -16,0%	↓ -10,8%	419.377	362.951	↓ -18,6%	↓ -13,5%
mar	87.606	117.855	↑ 26,6%	↑ 34,5%	61.395	73.759	↑ 13,0%	↑ 20,1%	31.056	24.639	↓ -25,4%	↓ -20,7%	598	791	↑ 24,4%	↑ 32,3%	180.657	217.046	↑ 13,0%	↑ 20,1%	432.326	457.714	↓ -0,39%	↑ 5,87%
abr	102.300	88.308	↓ -18,8%	↓ -13,7%	73.306	69.330	↓ -11,0%	↓ -5,42%	31.226	25.237	↓ -24,0%	↓ -19,2%	565	376	↓ -37,4%	↓ -33,5%	207.399	183.253	↓ -16,9%	↓ -11,6%	500.182	409.825	↓ -22,9%	↓ -18,1%
mai	77.755	85.911	↑ 3,95%	↑ 10,5%	70.493	67.707	↓ -9,64%	↓ -3,95%	29.441	25.435	↓ -18,7%	↓ -13,6%	337	750	↑ 109%	↑ 123%	178.027	179.806	↓ -4,98%	↑ 1,00%	418.379	390.402	↓ -12,2%	↓ -6,69%
jun	80.814	97.909	↑ 14,0%	↑ 21,2%	91.170	67.194	↓ -30,7%	↓ -26,3%	26.890	23.571	↓ -17,5%	↓ -12,3%	579	566	↓ -8,03%	↓ -2,25%	199.456	189.241	↓ -10,7%	↓ -5,12%	399.902	390.167	↓ -8,21%	↓ -2,43%
jul	99.007	120.739	↑ 14,7%	↑ 21,9%	99.512	70.851	↓ -33,0%	↓ -28,8%	26.364	22.705	↓ -19,0%	↓ -13,9%	460	519	↑ 6,15%	↑ 12,8%	225.343	214.815	↓ -10,3%	↓ -4,67%	416.586	417.781	↓ -5,65%	↑ 0,29%
ago	78.606	102.826	↑ 23,1%	↑ 30,8%	87.843	70.920	↓ -24,0%	↓ -19,3%	26.808	24.624	↓ -13,6%	↓ -8,15%	194.005	198.371	↓ -3,80%	↑ 2,25%	194.005	198.371	↓ -3,80%	↑ 2,25%	399.224	404.124	↓ -4,76%	↑ 1,23%
set	88.165	86.887	↓ -7,28%	↓ -1,45%	82.656	77.370	↓ -11,9%	↓ -6,40%	22.156	24.412	↑ 3,66%	↑ 10,2%	193.762	188.669	↓ -8,39%	↓ -2,63%	193.762	188.669	↓ -8,39%	↓ -2,63%	3.110.854	464.482	↓ -86,0%	↓ -85,1%
out	67.356	83.119	↑ 16,1%	↑ 23,4%	94.988	83.562	↓ -17,2%	↓ -12,0%	28.408	27.827	↓ -7,84%	↓ -2,0%	192.624	194.509	↓ -5,00%	↑ 0,98%	192.624	194.509	↓ -5,00%	↑ 0,98%	385.869	326.680	↓ -20,3%	↓ -15,3%
Total	813.061	920.358	↑ 6,50%	↑ 13,2%	816.473	730.347	↓ -15,8%	↓ -10,5%	279.633	242.948	↓ -18,3%	↓ -13,1%	5.229	4.597	↓ -17,3%	↓ -12,1%	1.917.812	1.898.265	↓ -6,88%	↓ -1,02%	6.964.480	4.087.699	↓ -44,8%	↓ -41,3%

Análise do Incremento Nominal e Real de 2016 com base na Inflação de 2015 (IPCA: 10,67% - R\$ mil)

	2015	2016	Real	Nominal
MS	722.466	950.846	↑ 18,9%	↑ 31,6%
MT	1.045.649	1.021.429	↓ -11,7%	↓ -2,32%
GO	334.166	322.204	↓ -12,9%	↓ -3,58%
DF	11.492	11.300	↓ -11,2%	↓ -1,67%
CT-OESTE	2.113.789	2.305.798	↓ -1,43%	↑ 9,08%
BRASIL	5.769.752	7.835.344	↑ 22,7%	↑ 35,8%

ICMS - Setor Primário - 2017 (R\$ mil)



Fontes:
Dados MS, MT, GO, DF, Centro-oeste e Brasil: Cotepe-Confaz.

Análise do Incremento Nominal e Real das Receitas Tributárias (ICMS, IPVA, ITCD) e da Receita Corrente Líquida (RCL)

Análise do Incremento Nominal e Real de 2017 com base na Inflação de 2016 (IPCA: 6,29% - R\$ mil)

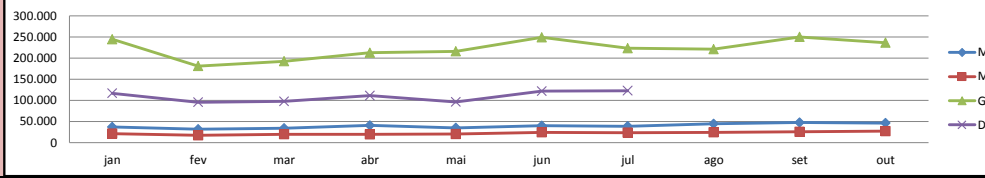
ICMS - Setor Secundário

Mês	Mato Grosso do Sul				Mato Grosso				Goiás				Distrito Federal				Centro-Oeste				Brasil			
	2016	2017	Real	Nominal	2016	2017	Real	Nominal	2016	2017	Real	Nominal	2016	2017	Real	Nominal	2016	2017	Real	Nominal	2016	2017	Real	Nominal
jan	34.615	37.198	↑ 1,10%	↑ 7,5%	24.377	21.449	↓ -17,2%	↓ -12,0%	225.782	244.645	↑ 1,94%	↑ 8,35%	104.793	117.139	↑ 5,17%	↑ 11,8%	389.569	420.432	↑ 1,54%	↑ 7,92%	8.388.171	10.924.780	↑ 22,5%	↑ 30,2%
fev	26.893	31.640	↑ 10,7%	↑ 17,7%	19.132	17.319	↓ -14,8%	↓ -9,48%	174.497	181.558	↓ -2,11%	↑ 4,05%	90.571	95.961	↓ -0,32%	↑ 5,95%	311.094	326.480	↓ -1,26%	↑ 4,95%	7.926.751	7.611.578	↓ -9,66%	↓ -3,98%
mar	30.914	33.842	↑ 2,99%	↑ 9,5%	18.905	19.876	↓ -1,09%	↑ 5,14%	164.241	193.061	↑ 10,6%	↑ 17,5%	78.745	97.876	↑ 16,9%	↑ 24,3%	292.806	344.656	↑ 10,7%	↑ 17,7%	8.011.581	8.714.963	↑ 2,34%	↑ 8,78%
abr	34.117	41.008	↑ 13,1%	↑ 20,2%	21.195	19.768	↓ -12,3%	↓ -6,73%	201.525	213.005	↓ -0,56%	↑ 5,70%	106.464	111.178	↓ -1,75%	↑ 4,43%	363.302	384.960	↓ -0,31%	↑ 5,96%	8.327.924	8.913.847	↑ 0,70%	↑ 7,04%
mai	33.775	35.256	↓ -1,79%	↑ 4,38%	20.421	20.459	↓ -5,74%	↑ 0,19%	196.115	216.465	↑ 3,84%	↑ 10,4%	101.933	96.431	↓ -11,0%	↓ -5,40%	352.245	368.613	↓ -1,55%	↑ 4,65%	8.153.092	8.277.009	↓ -4,49%	↑ 1,52%
jun	30.959	40.045	↑ 21,7%	↑ 29,3%	23.422	24.356	↓ -2,17%	↑ 3,99%	198.339	249.550	↑ 18,4%	↑ 25,8%	6.957	122.004	↑ 1550%	↑ 1654%	259.678	435.957	↑ 57,9%	↑ 67,9%	8.123.001	9.013.809	↑ 4,40%	↑ 11,0%
jul	35.335	38.818	↑ 3,36%	↑ 9,86%	23.358	23.639	↓ -4,79%	↑ 1,20%	233.397	223.509	↓ -9,90%	↓ -4,24%	108.143	122.977	↑ 6,99%	↑ 13,7%	400.233	408.945	↓ -3,87%	↑ 2,18%	8.199.865	8.455.715	↓ -2,98%	↑ 3,12%
ago	36.492	44.815	↑ 15,5%	↑ 22,8%	22.293	24.445	↑ 3,16%	↑ 9,65%	202.192	221.138	↑ 2,90%	↑ 9,37%					368.938	290.400	↓ -25,9%	↓ -21,3%	8.751.395	8.825.911	↓ -5,12%	↑ 0,85%
set	38.478	47.731	↑ 16,7%	↑ 24,0%	21.258	25.770	↑ 14,1%	↑ 21,2%	218.368	250.472	↑ 7,91%	↑ 14,7%					392.726	323.974	↓ -22,4%	↓ -17,5%	54.559.738	9.337.028	↓ -83,9%	↓ -82,9%
out	37.116	46.347	↑ 17,5%	↑ 24,9%	26.531	27.038	↓ -4,12%	↑ 1,91%	229.469	236.909	↓ -2,87%	↑ 3,24%					408.128	310.296	↓ -28,5%	↓ -24,0%	8.545.623	8.148.024	↓ -10,3%	↓ -4,65%
Total	338.694	396.700	↑ 10,2%	↑ 17,1%	220.892	224.119	↓ -4,54%	↑ 1,46%	2.043.925	2.230.312	↑ 2,66%	↑ 9,12%	597.606	763.566	↑ 20,21%	↑ 27,77%	3.538.719	3.614.713	↓ -3,90%	↑ 2,15%	128.987.141	88.222.664	↓ -35,7%	↓ -31,6%

Análise do Incremento Nominal e Real de 2016 com base na Inflação de 2015 (IPCA: 10,67% - R\$ mil)

	2015	2016	Real	Nominal
MS	411.856	415.059	↓ -8,94%	↑ 0,78%
MT	320.256	275.317	↓ -22,3%	↓ -14,0%
GO	2.561.902	2.527.374	↓ -10,9%	↓ -1,35%
DF	1.228.103	1.160.133	↓ -14,6%	↓ -5,53%
CT-OESTE	4.522.132	4.377.897	↓ -12,5%	↓ -3,19%
BRASIL	102.987.417	146.786.278	↑ 28,8%	↑ 42,5%

ICMS - Setor Secundário - 2017 (R\$ mil)



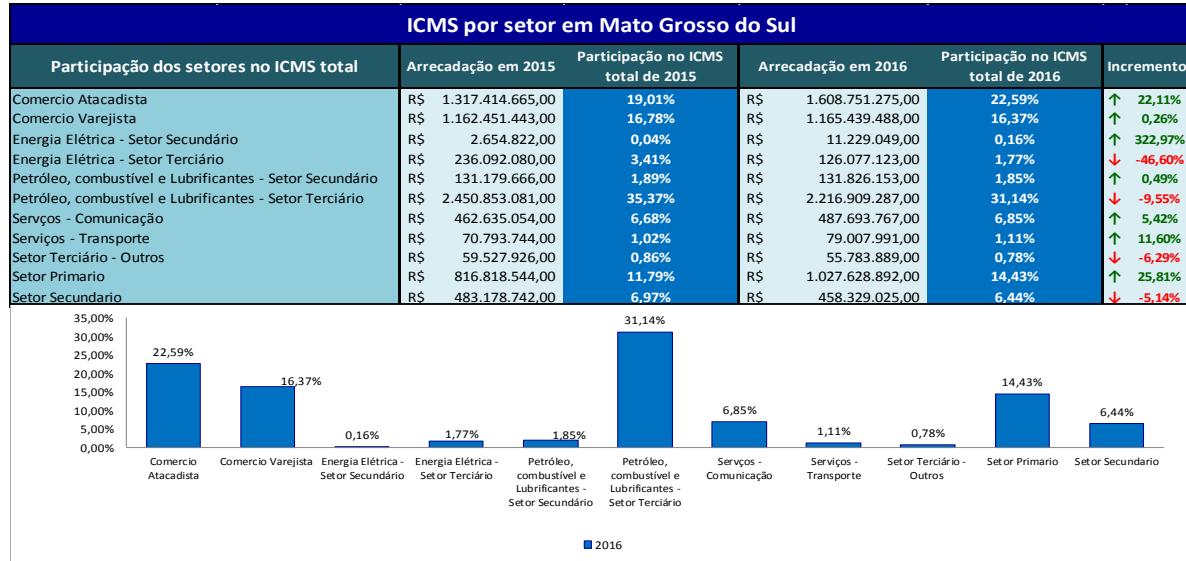
Fontes:
Dados MS, MT, GO, DF, Centro-oeste e Brasil: Cotepe-Confaz.

Previsões econométricas para os próximos 12 meses

Receita Corrente Líquida (RCL) - MS (R\$ mil)				ICMS - MS (R\$ mil)				ICMS - Atacado - MS (R\$ mil)				ICMS - Varejo - MS (R\$ mil)											
Dados Previstos				Dados Previstos				Dados Previstos				Dados Previstos											
jan/18	R\$	734.534,51	jul/18	R\$	824.210,12	jan/18	R\$	627.213,30	jan/18	R\$	721.280,00	jan/18	R\$	140.340,90	jul/18	R\$	177.705,00	jan/18	R\$	93.318,73	jul/18	R\$	106.084,90
fev/18	R\$	761.034,60	ago/18	R\$	831.377,52	fev/18	R\$	669.511,40	fev/18	R\$	738.907,40	fev/18	R\$	149.876,60	ago/18	R\$	190.092,00	fev/18	R\$	95.866,73	ago/18	R\$	108.226,34
mar/18	R\$	789.471,86	set/18	R\$	850.585,37	mar/18	R\$	711.218,70	mar/18	R\$	731.543,00	mar/18	R\$	162.673,50	set/18	R\$	191.867,40	mar/18	R\$	100.464,12	set/18	R\$	109.324,60
abr/18	R\$	803.159,06	out/18	R\$	868.541,00	abr/18	R\$	685.887,60	abr/18	R\$	765.419,50	abr/18	R\$	164.815,20	out/18	R\$	205.845,20	abr/18	R\$	103.324,80	out/18	R\$	112.000,70
mai/18	R\$	811.478,11	nov/18	R\$	1.035.335,22	mai/18	R\$	695.758,70	mai/18	R\$	759.128,70	mai/18	R\$	171.082,70	nov/18	R\$	200.844,40	mai/18	R\$	104.472,53	nov/18	R\$	112.831,88
jun/18	R\$	836.554,13	dez/18	R\$	995.332,28	jun/18	R\$	699.952,40	jun/18	R\$	754.644,40	jun/18	R\$	170.279,70	dez/18	R\$	199.726,50	jun/18	R\$	104.417,95	dez/18	R\$	123.718,31
Média dos modelos ETS e LSTVAR. Erro percentual acumulado de -0,35%.				Média dos modelos Arima e LSTVAR. Erro percentual acumulado de 0%.				Modelo Star. Erro percentual acumulado de -3,25%.				Média dos modelos RW, Star e VAR. Erro percentual acumulado de 0,34%.											
Realizado x Previsto - RCL (R\$ mil)				Realizado x Previsto - ICMS (R\$ mil)				Realizado x Previsto - ICMS - Atacado (R\$ mil)				Realizado x Previsto - ICMS - Varejo (R\$ mil)											
ICMS - St. Terc. - Serviços Comunicação - MS (R\$ mil)				ICMS - St. Terc. - Serviços Transportes - MS (R\$ mil)				ICMS - Energia Elétrica St. Terc. - MS (R\$ mil)				ICMS - Outros St. Terc. - MS (R\$ mil)											
Dados Previstos				Dados Previstos				Dados Previstos				Dados Previstos											
jan/18	R\$	33.273,13	jul/18	R\$	34.442,01	jan/18	R\$	7.520,93	jul/18	R\$	7.392,50	jan/18	R\$	52.939,11	jul/18	R\$	49.015,91	jan/18	R\$	18.465,00	jul/18	R\$	16.459,00
fev/18	R\$	33.465,15	ago/18	R\$	34.640,77	fev/18	R\$	6.581,22	ago/18	R\$	7.429,92	fev/18	R\$	50.251,54	ago/18	R\$	50.936,44	fev/18	R\$	13.484,00	ago/18	R\$	16.308,00
mar/18	R\$	33.658,28	set/18	R\$	34.840,69	mar/18	R\$	6.675,53	set/18	R\$	7.886,87	mar/18	R\$	51.401,68	set/18	R\$	44.078,66	mar/18	R\$	13.872,00	set/18	R\$	23.934,00
abr/18	R\$	33.852,52	out/18	R\$	35.041,75	abr/18	R\$	6.975,86	out/18	R\$	7.864,33	abr/18	R\$	52.808,43	out/18	R\$	53.540,18	abr/18	R\$	14.172,00	out/18	R\$	24.612,00
mai/18	R\$	34.047,89	nov/18	R\$	35.243,98	mai/18	R\$	7.084,72	nov/18	R\$	7.938,82	mai/18	R\$	50.169,30	nov/18	R\$	48.579,32	mai/18	R\$	15.306,00	nov/18	R\$	23.944,00
jun/18	R\$	34.244,38	dez/18	R\$	35.447,38	jun/18	R\$	7.259,60	dez/18	R\$	7.857,83	jun/18	R\$	45.518,44	dez/18	R\$	61.028,17	jun/18	R\$	16.945,00	dez/18	R\$	25.330,00
Modelo RW, Erro percentual acumulado de 4,14%				Média dos modelos Naive e RW. Erro percentual acumulado de -0,6%.				Média dos modelos Arima, Var e LSTVAR. Erro percentual acumulado de 0,5%.				Modelo Naive. Erro percentual acumulado de -1,38%.											
Realizado x Previsto - ICMS - Comunicação (R\$ mil)				Realizado x Previsto - ICMS - Transportes (R\$ mil)				Realizado x Previsto - ICMS - Energia Terc. (R\$ mil)				Realizado x Previsto - ICMS - Outros (R\$ mil)											
ICMS - Petr, Comb e Lub - St. Sec. - MS (R\$ mil)				ICMS - Petr, Comb e Lub - St. Terc. - MS (R\$ mil)				ICMS - Primário - MS (R\$ mil)				ICMS - St. Terc. - Serviços Comunicação - MS (R\$ mil)											
Dados Previstos				Dados Previstos				Dados Previstos				Dados Previstos											
jan/18	R\$	10.293,38	jul/18	R\$	8.789,27	jan/18	R\$	238.864,70	jul/18	R\$	261.207,60	jan/18	R\$	107.288,18	jul/18	R\$	127.891,92	jan/18	R\$	10.293,38	jul/18	R\$	8.789,27
fev/18	R\$	7.574,64	ago/18	R\$	10.038,95	fev/18	R\$	241.265,70	ago/18	R\$	270.074,60	fev/18	R\$	137.540,88	ago/18	R\$	119.896,09	fev/18	R\$	7.574,64	ago/18	R\$	10.038,95
mar/18	R\$	6.807,36	set/18	R\$	9.136,72	mar/18	R\$	275.320,20	set/18	R\$	274.630,90	mar/18	R\$	115.184,73	set/18	R\$	105.695,26	mar/18	R\$	6.807,36	set/18	R\$	9.136,72
abr/18	R\$	7.996,53	out/18	R\$	10.948,38	abr/18	R\$	249.244,10	out/18	R\$	300.165,00	abr/18	R\$	139.724,11	out/18	R\$	101.457,29	abr/18	R\$	7.996,53	out/18	R\$	10.948,38
mai/18	R\$	8.042,09	nov/18	R\$	10.043,12	mai/18	R\$	250.301,20	nov/18	R\$	276.008,80	mai/18	R\$	121.873,73	nov/18	R\$	111.933,65	mai/18	R\$	8.042,09	nov/18	R\$	10.043,12
jun/18	R\$	8.072,44	dez/18	R\$	10.692,13	jun/18	R\$	248.515,30	dez/18	R\$	265.582,80	jun/18	R\$	131.726,60	dez/18	R\$	110.339,81	jun/18	R\$	8.072,44	dez/18	R\$	10.692,13
Média dos modelos Naive, ETS e Var. Erro percentual acumulado de -1,56%.				Média dos modelos Star e LSTVAR. Erro percentual acumulado de 0,01%.				Modelo Star. Erro percentual acumulado de -13,04%.				Média dos modelos Naive, ETS e Var. Erro percentual acumulado de -1,56%.											
Realizado x Previsto - ICMS - Combust. St. Sec. (R\$ mil)				Realizado x Previsto - ICMS - Combust. St. Terc. (R\$ mil)				Realizado x Previsto - ICMS - St. Primário (R\$ mil)				Realizado x Previsto - ICMS - St. Secundário (R\$ mil)											

Elaboração Própria. Fonte de Dados: RCL e ICMS: SCGE - MS; ICMS setor: Cotepe/Confaz.

Boletim FOCO - MS
Dezembro de 2017



Elaboração Própria. Fonte de dados: Superintendência de Contabilidade Geral do Estado - MS